

Kappa Pro 18LF-8 Double 18 Vented Subwoofer

By Jerry McNutt, Eminence Speaker LLC
1600 Watts, F3 at 48 Hz, Great Rock and Roll Sub
High Pass at 40 Hz and Low Pass at 120 Hz for Subwoofer Use



Box Properties

--Description--

Name:

Type: Vented Box

Shape: Prism, square

--Box Parameters--

Vb = 12 cu.ft

V(total) = 12.74 cu.ft

Fb = 47 Hz

QL = 7

F3 = 47.83 Hz

Fill = normal

--Vents--

No. of Vents = 8

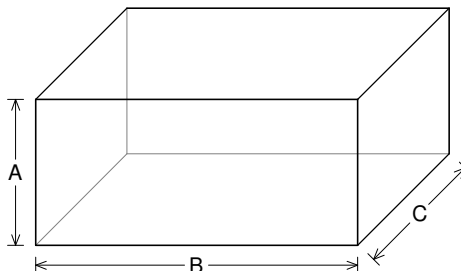
Vent shape = rectangle

Vent ends = one flush

Hv = 3.576 in

Wv = 3.576 in

Lv = 3.621 in



--External Dimensions--

A = 21.5 in

B = 47.5 in

C = 25.43 in

--Internal Dimensions--

A = 20 in

B = 46 in

C = 23.93 in

--Wall Thickness--

Front = 0.75 in

Side = 0.75 in

Driver Properties

--Description--

Name: Kappa Pro 18LF-8

Type: Standard one-way driver

Company: Eminence Speaker LLC USA

Comment: 18" Cast Frame Pro Woofer/Sub Woofer

--Configuration--

No. of Drivers = 2

Mounting = Standard

Wiring = Parallel

Drivers sum coherently = Yes

--Mechanical Parameters--

Fs = 32.03 Hz

Qms = 10.66

Vas = 391.6 liters [783.2]

Cms = 0.21 mm/N [0.105]

Mms = 118.7 g [237.3]

Rms = 2.24 kg/s [4.48]

Xmax = 8 mm

Xmech = 18 mm

P-Dia = 382 mm [540.2]

Sd = 1159 sq.cm [2318]

P-Vd = 0.917 liters [1.833]

--Electrical Parameters--

Qes = 0.34

Re = 5.39 ohms [2.695]

Le = 1.21 mH [0.605]

Z = 8 ohms [4]

BL = 19.39 Tm [19.46]

Pe = 800 watts [1600]

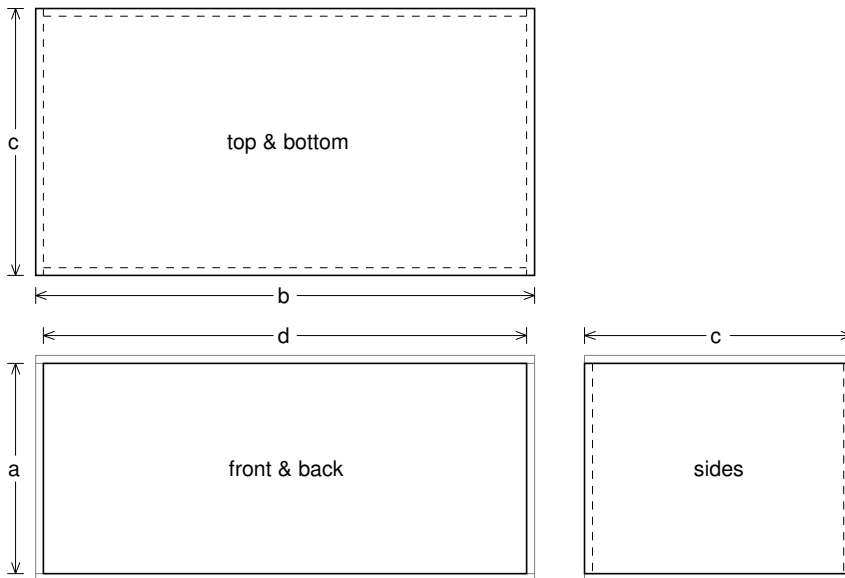
--Electromech. Parameters--

Qts = 0.33

no = 3.649 % [7.298]

1-W SPL = 97.77 dB [100.8]

2.83-V SPL = 99.48 dB [105.5]



Box Parts

Box Shape: Square Prism

1 Top, 1 Bottom: depth (c) = 25.43 in
width (b) = 47.5, thickness = 0.75 in

1 Front, 1 Back: height (a) = 20 in
width (d) = 46, thickness = 0.75 in

2 Sides: height (a) = 20 in
depth (c) = 25.43, thickness = 0.75 in

--Vent Parts--

8 Tops, 8 Bottoms:

width (e) = 3.826, length (h) = 3.621 in
thickness = 0.125 in

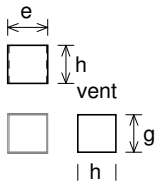
16 Sides:

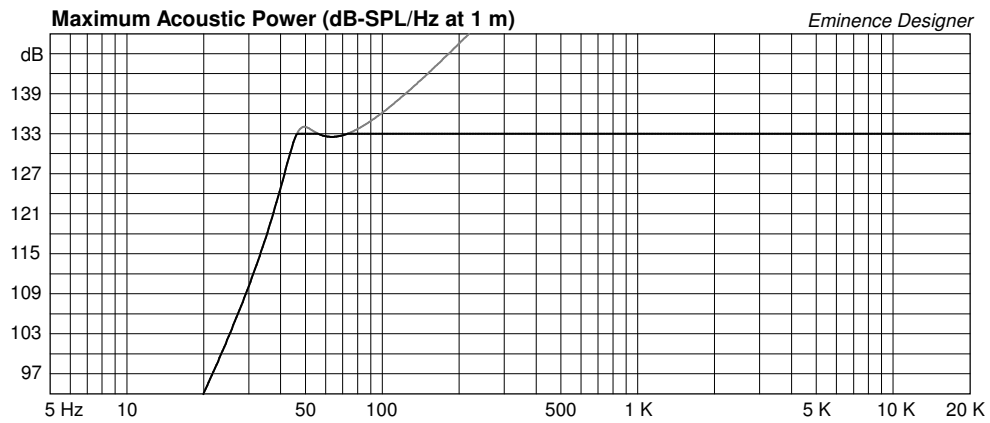
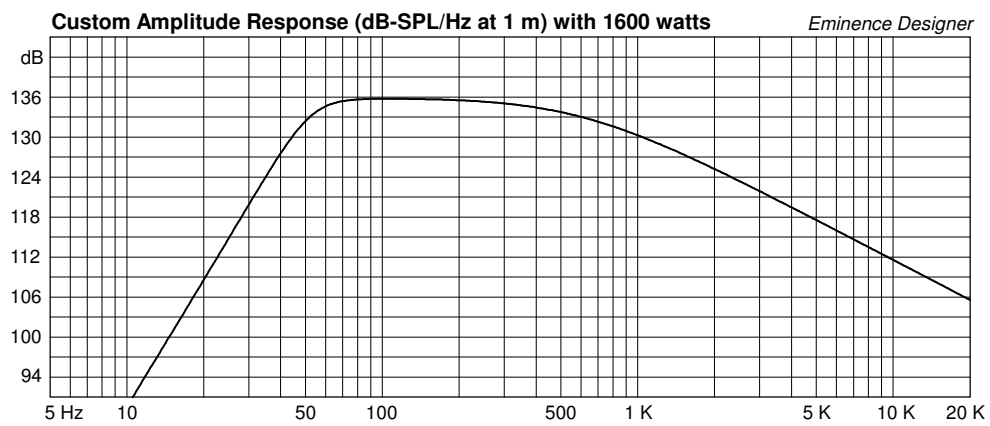
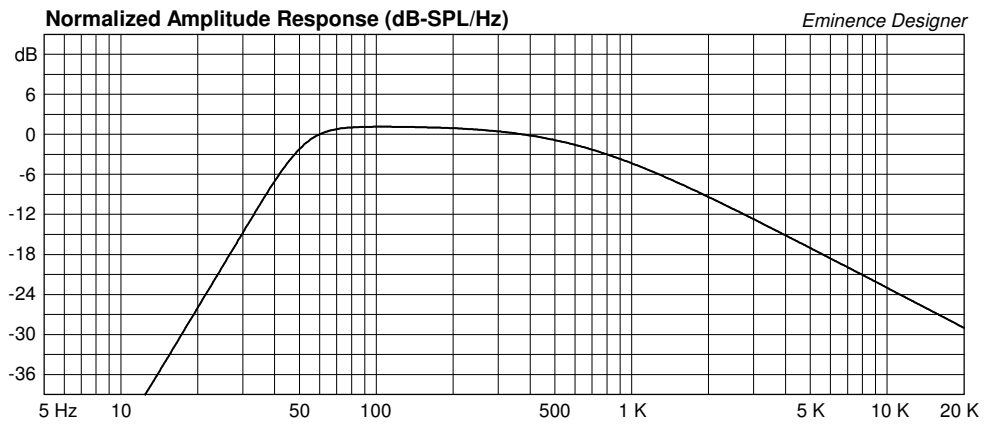
height (g) = 3.576, length (h) = 3.621 in
thickness = 0.125 in

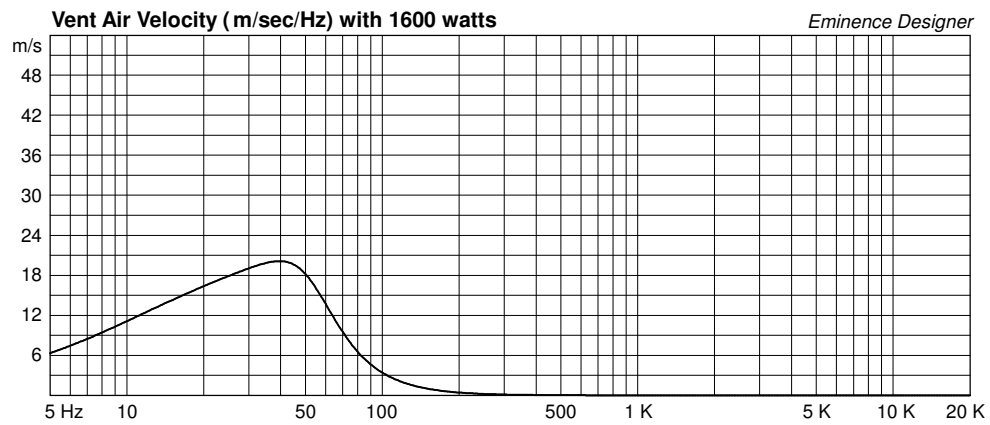
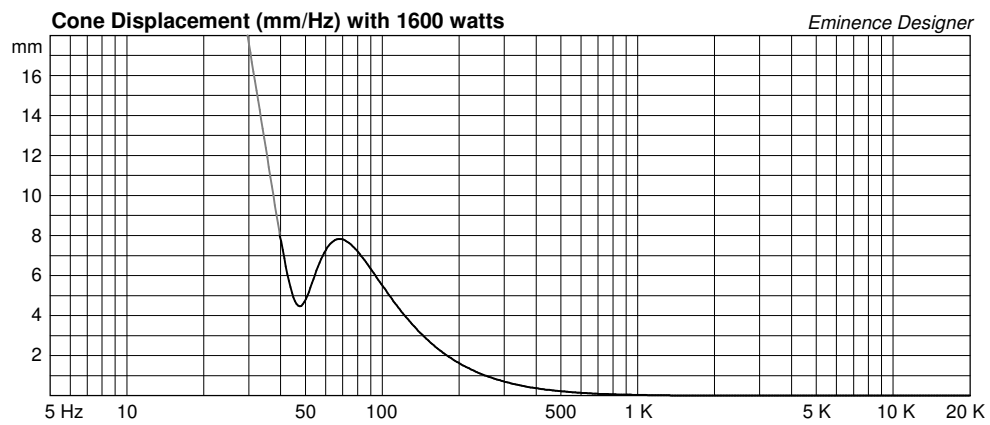
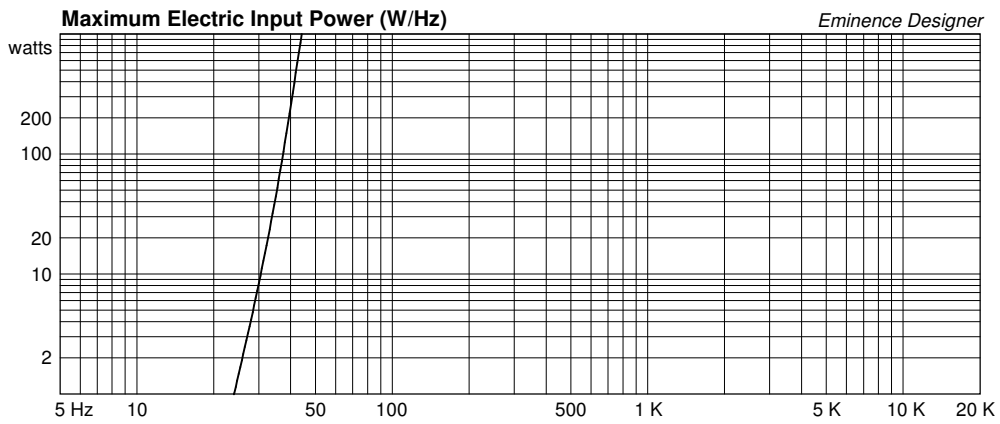
--Driver Mounting--

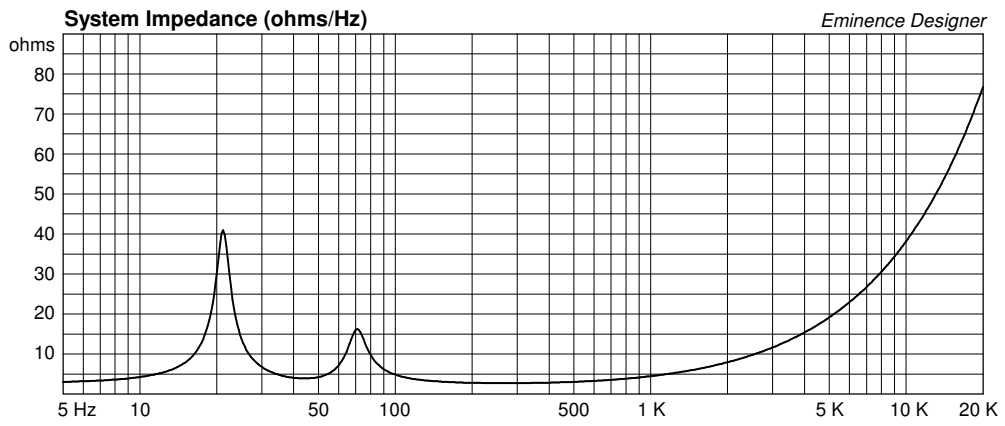
Mounting: Flush

Aim: All drivers face same direction









Kappa Pro 18LF-8 Large Vented Subwoofer

By Jerry McNutt, Eminence Speaker LLC

500 Watts, F3 at 40 Hz

High Pass at 35 Hz and Low Pass at 100 Hz for Subwoofer Use



Box Properties

--Description--

Name:

Type: Vented Box

Shape: Prism, square

--Box Parameters--

Vb = 10 cu.ft

V(total) = 10.34 cu.ft

Fb = 40 Hz

QL = 7

F3 = 39.58 Hz

Fill = normal

--Vents--

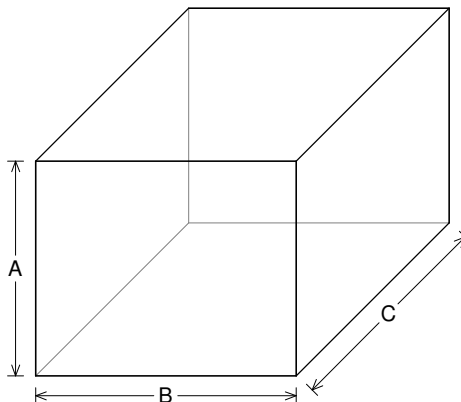
No. of Vents = 4

Vent shape = round

Vent ends = one flush

Dv = 4 in

Lv = 2.823 in



--External Dimensions--

A = 23.5 in

B = 28.5 in

C = 31.58 in

--Internal Dimensions--

A = 22 in

B = 27 in

C = 30.08 in

--Wall Thickness--

Front = 0.75 in

Side = 0.75 in

Driver Properties

--Description--

Name: Kappa Pro 18LF-8

Type: Standard one-way driver

Company: Eminence Speaker LLC USA

Comment: 18" Cast Frame Pro Woofer/Sub Woofer

--Configuration--

No. of Drivers = 1

--Mechanical Parameters--

Fs = 32.03 Hz

Qms = 10.66

Vas = 391.6 liters

Cms = 0.21 mm/N

Mms = 118.7 g

Rms = 2.24 kg/s

Xmax = 8 mm

Xmech = 18 mm

P-Dia = 382 mm

Sd = 1159 sq.cm

P-Vd = 0.917 liters

--Electrical Parameters--

Qes = 0.34

Re = 5.39 ohms

Le = 1.21 mH

Z = 8 ohms

BL = 19.39 Tm

Pe = 800 watts

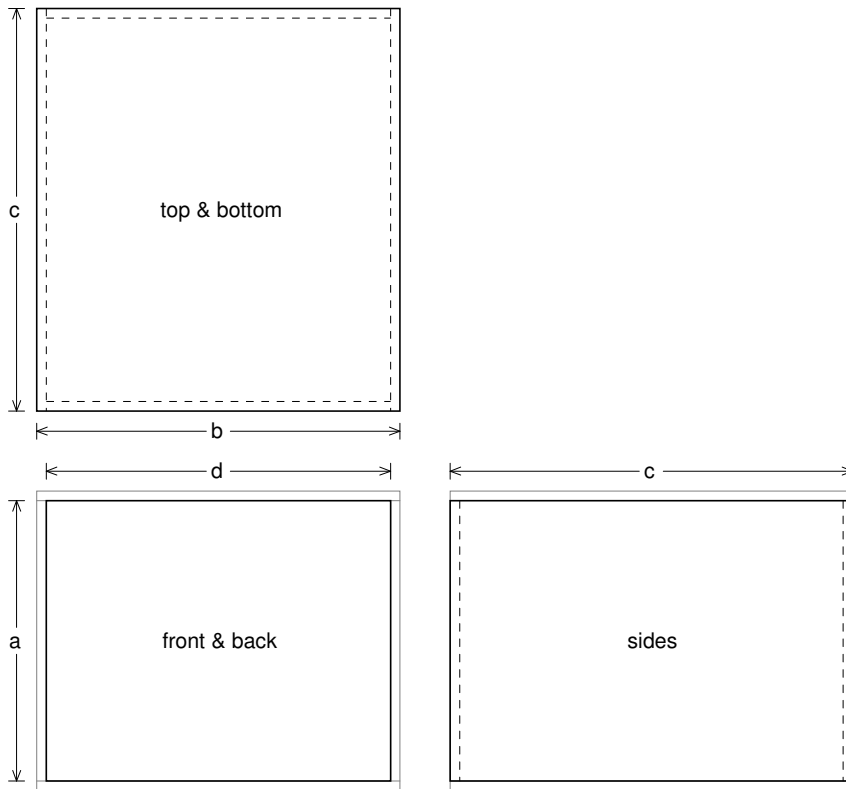
--Electromech. Parameters--

Qts = 0.33

no = 3.649 %

1-W SPL = 97.77 dB

2.83-V SPL = 99.48 dB



Box Parts

Box Shape: Square Prism

1 Top, 1 Bottom: depth (c) = 31.58 in
width (b) = 28.5, thickness = 0.75 in

1 Front, 1 Back: height (a) = 22 in
width (d) = 27, thickness = 0.75 in

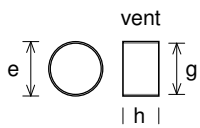
2 Sides: height (a) = 22 in
depth (c) = 31.58, thickness = 0.75 in

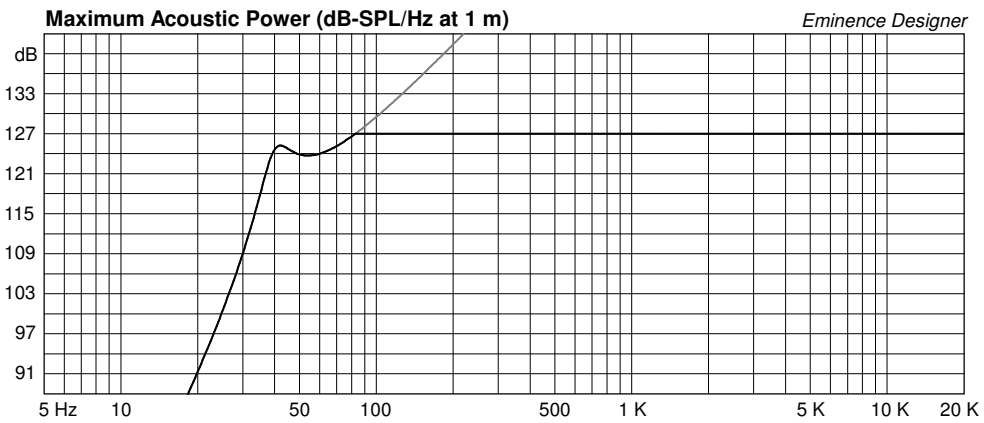
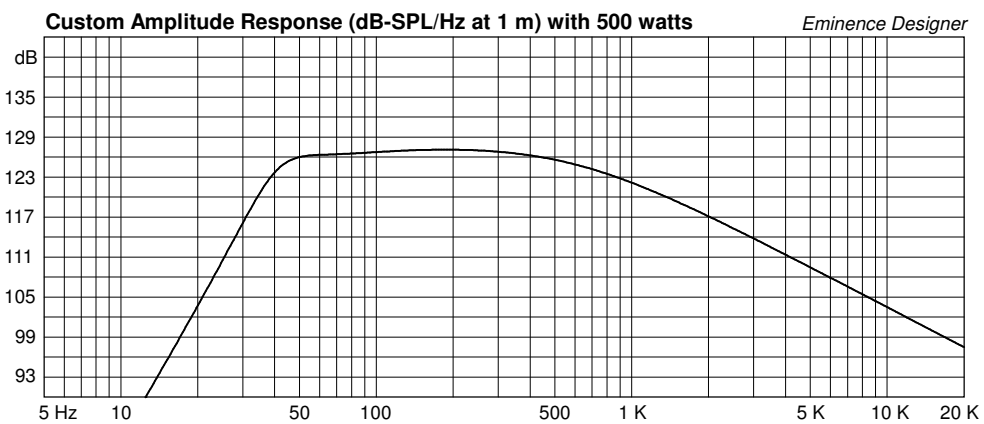
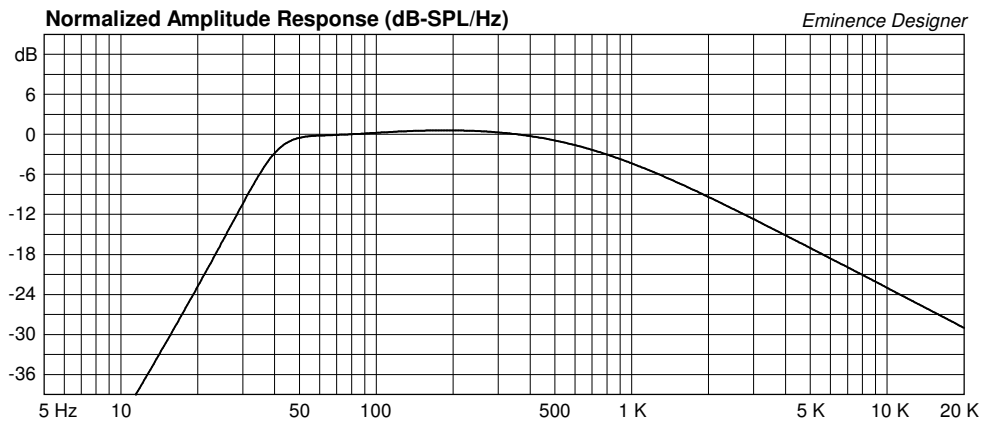
--Vent Parts--

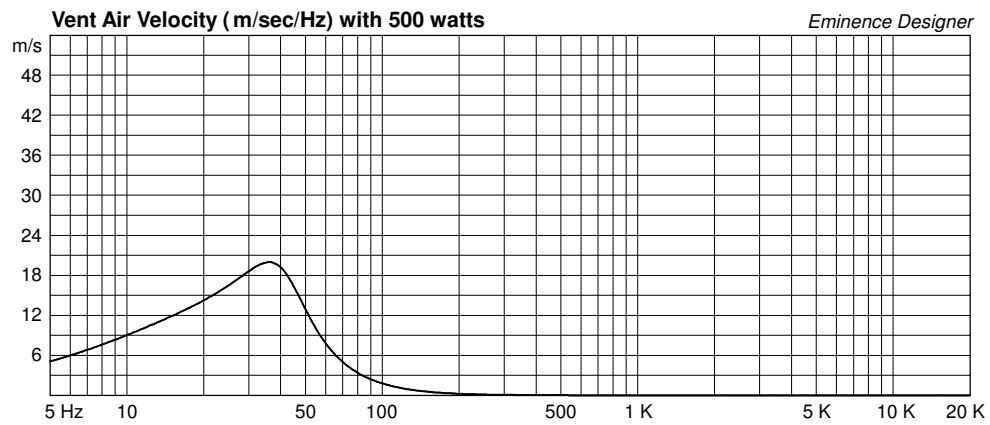
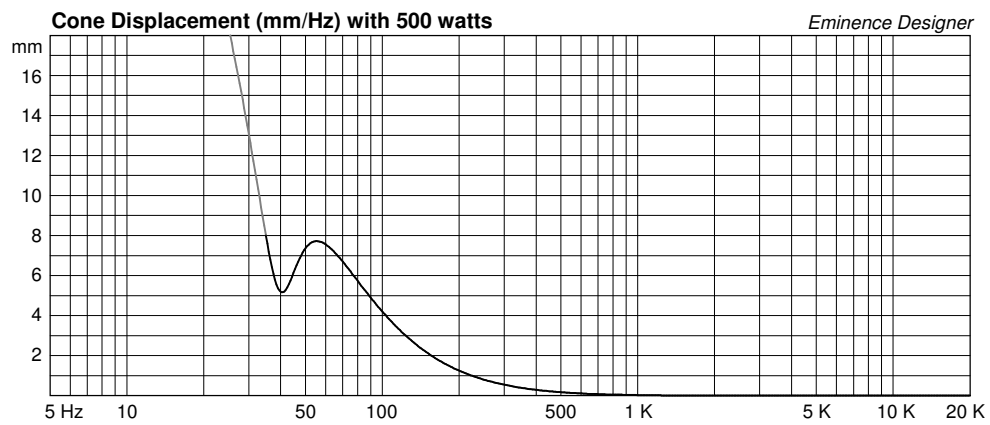
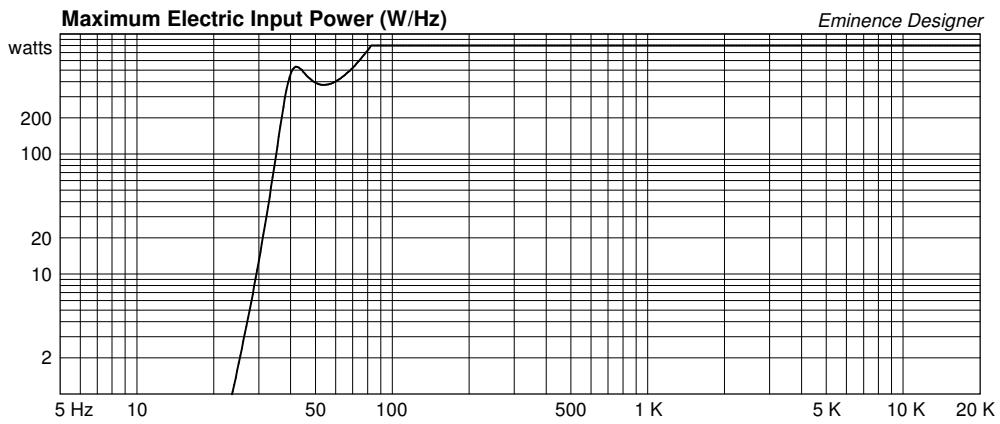
4 Ducts: outside diameter (e) = 4.25 in
inside diameter (g) = 4 in
length (h) = 2.823 in

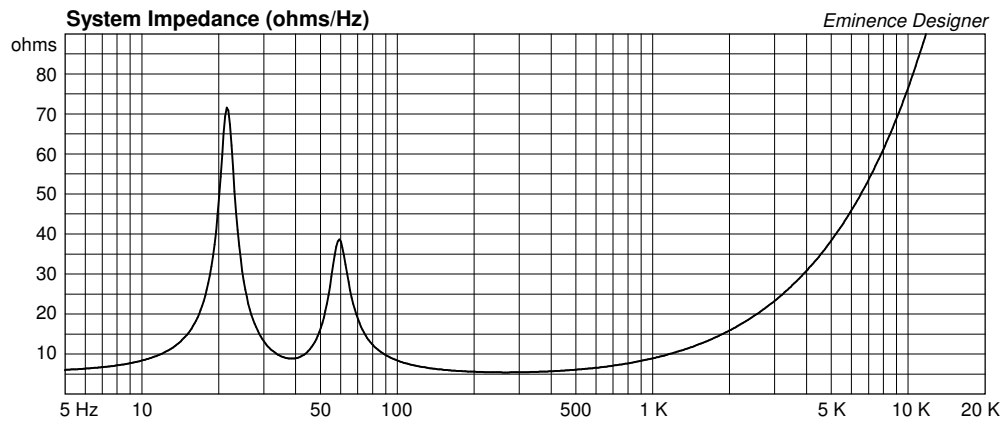
--Driver Mounting--

Mounting: Flush









Kappa Pro 18LF-8 Med Vented Subwoofer

By Jerry McNutt, Eminence Speaker LLC
700 Watts, F3 at 46 Hz, Great Rock and Roll Sub
High Pass at 35 Hz and Low Pass at 120 Hz for Subwoofer Use



Box Properties

--Description--

Name:

Type: Vented Box

Shape: Prism, square

--Box Parameters--

Vb = 6.8 cu.ft

V(total) = 7.185 cu.ft

Fb = 45 Hz

QL = 7

F3 = 45.53 Hz

Fill = normal

--Vents--

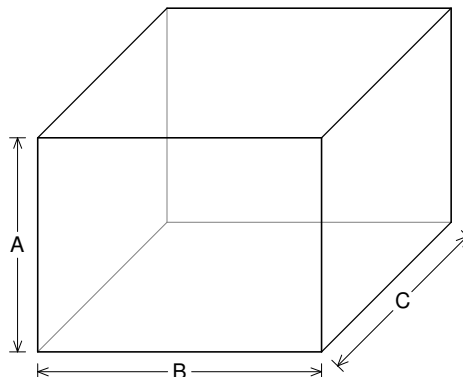
No. of Vents = 4

Vent shape = round

Vent ends = one flush

Dv = 4 in

Lv = 4.196 in



--External Dimensions--

A = 21.5 in

B = 28.5 in

C = 24.49 in

--Internal Dimensions--

A = 20 in

B = 27 in

C = 22.99 in

--Wall Thickness--

Front = 0.75 in

Side = 0.75 in

Driver Properties

--Description--

Name: Kappa Pro 18LF-8

Type: Standard one-way driver

Company: Eminence Speaker LLC USA

Comment: 18" Cast Frame Pro Woofer/Sub Woofer

--Configuration--

No. of Drivers = 1

--Mechanical Parameters--

Fs = 32.03 Hz

Qms = 10.66

Vas = 391.6 liters

Cms = 0.21 mm/N

Mms = 118.7 g

Rms = 2.24 kg/s

Xmax = 8 mm

Xmech = 18 mm

P-Dia = 382 mm

Sd = 1159 sq.cm

P-Vd = 0.917 liters

--Electrical Parameters--

Qes = 0.34

Re = 5.39 ohms

Le = 1.21 mH

Z = 8 ohms

BL = 19.39 Tm

Pe = 800 watts

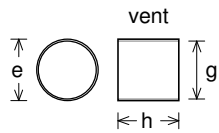
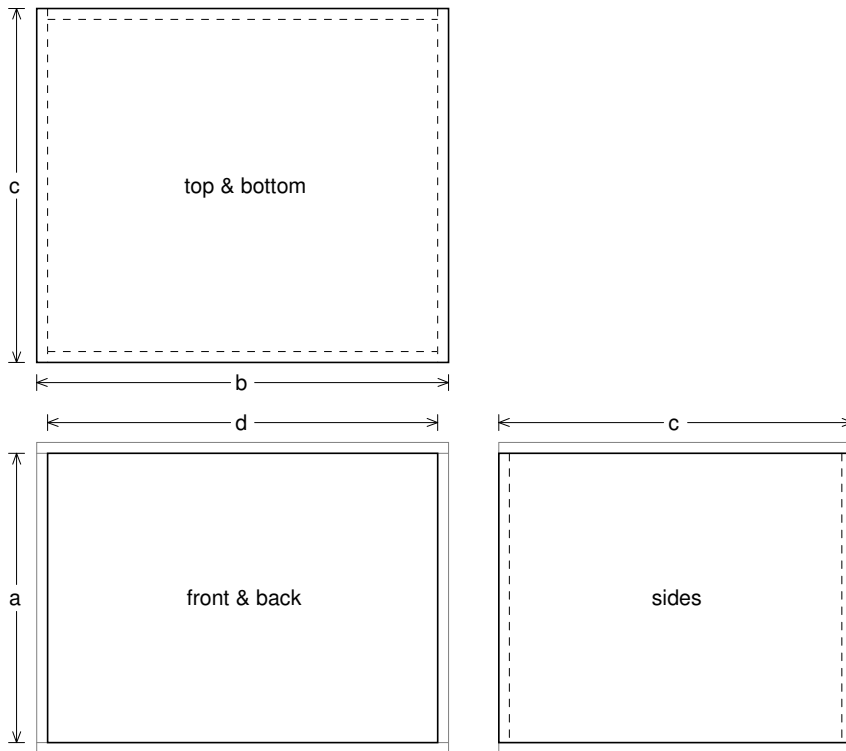
--Electromech. Parameters--

Qts = 0.33

no = 3.649 %

1-W SPL = 97.77 dB

2.83-V SPL = 99.48 dB



Box Parts

Box Shape: Square Prism

1 Top, 1 Bottom: depth (c) = 24.49 in
width (b) = 28.5, thickness = 0.75 in

1 Front, 1 Back: height (a) = 20 in
width (d) = 27, thickness = 0.75 in

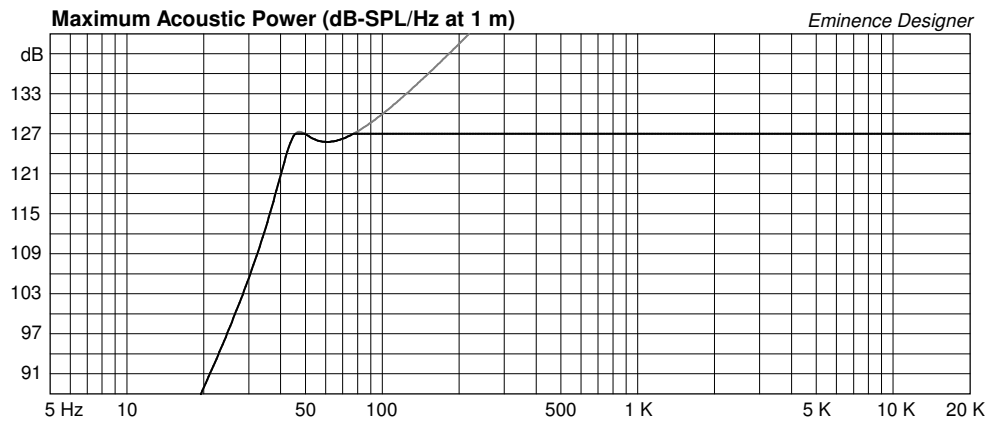
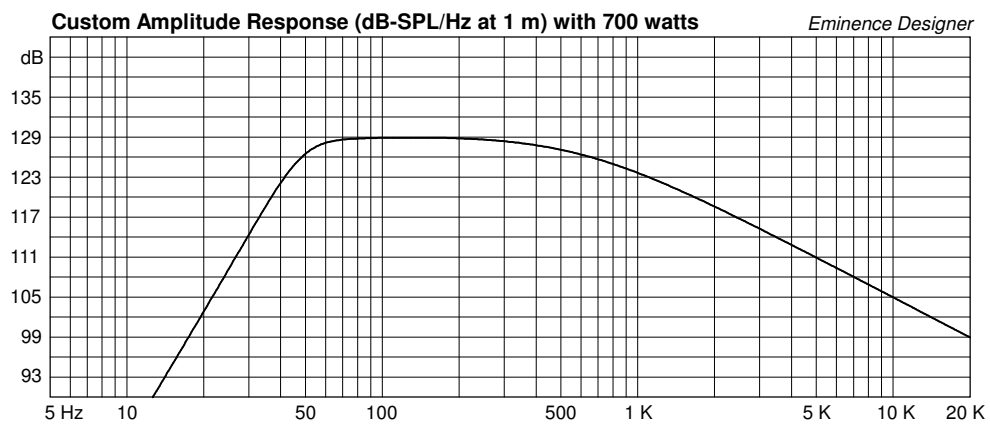
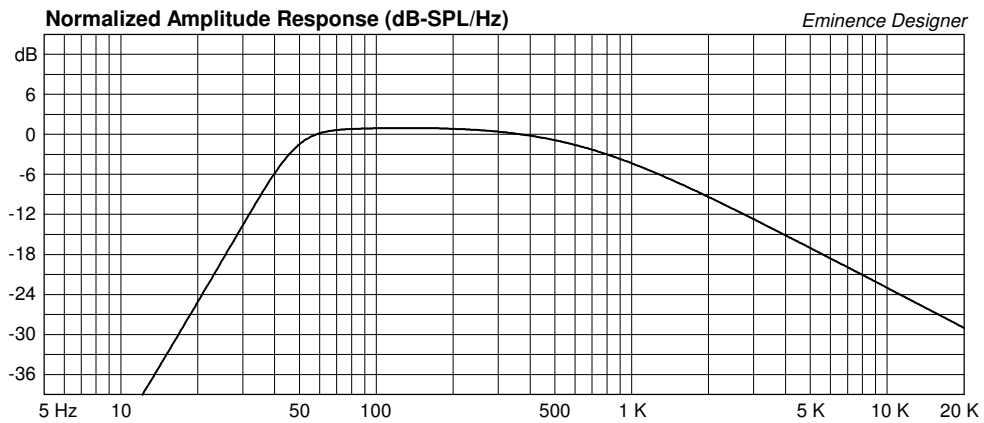
2 Sides: height (a) = 20 in
depth (c) = 24.49, thickness = 0.75 in

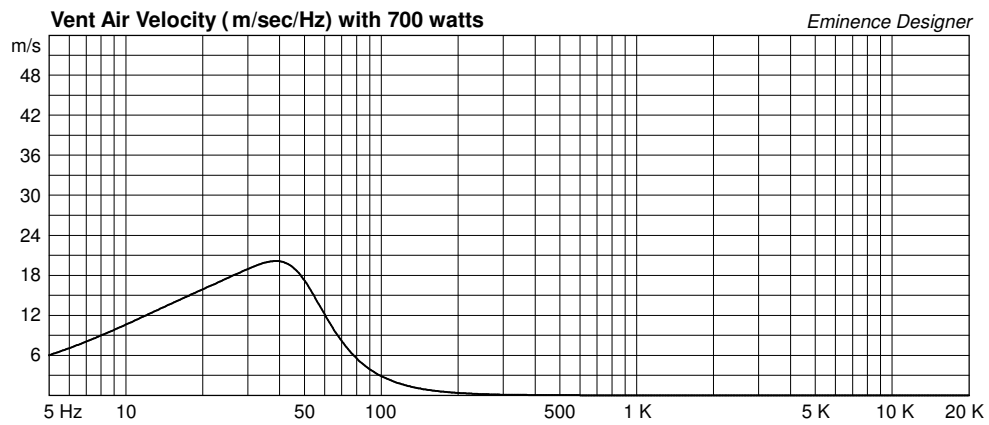
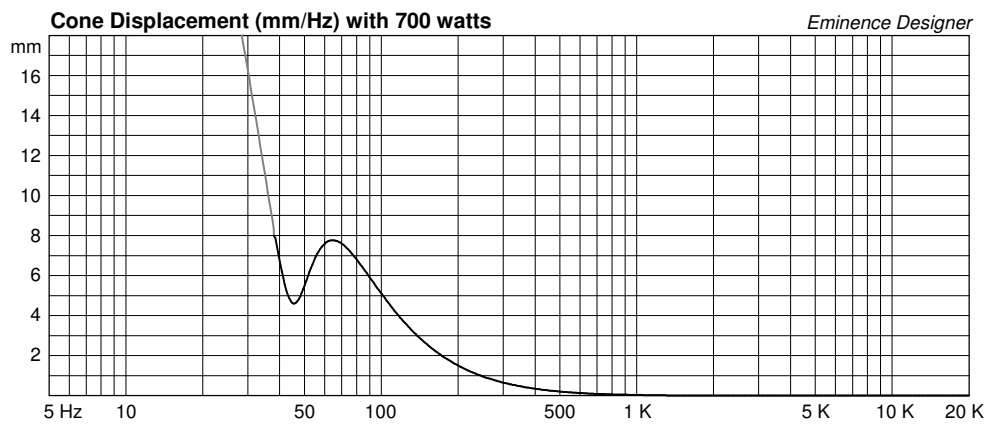
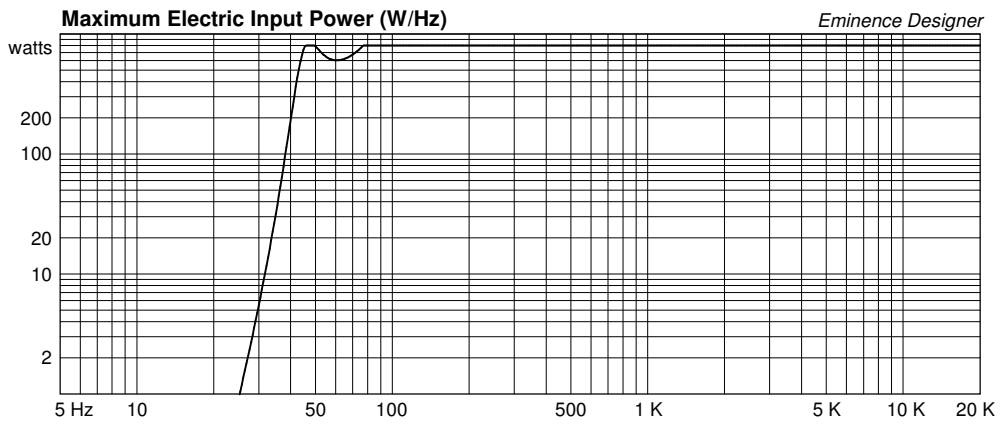
--Vent Parts--

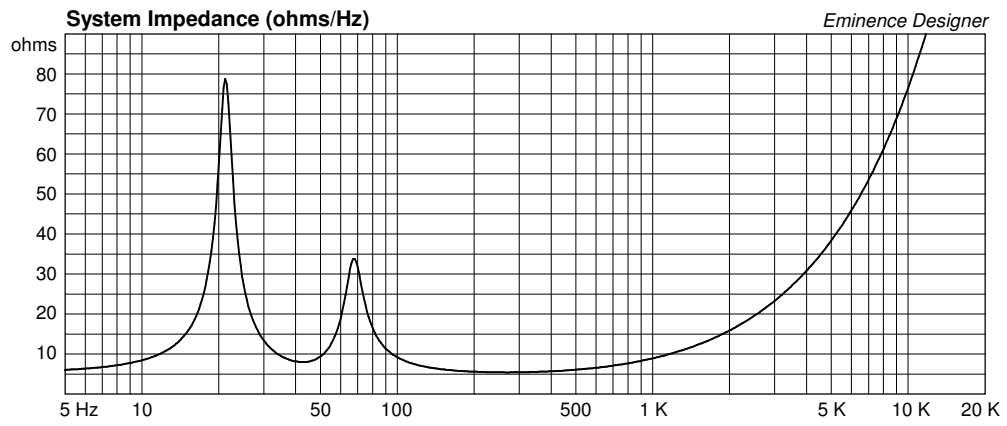
4 Ducts: outside diameter (e) = 4.25 in
inside diameter (g) = 4 in
length (h) = 4.196 in

--Driver Mounting--

Mounting: Flush







Kappa Pro 18LF-8 Small Vented Woofer Box

By Jerry McNutt, Eminence Speaker LLC

800 Watts, F3 at 52 Hz

Run full range for Bass Guitar, or HP at 40 Hz and Low Pass at 120 Hz for Sub



Box Properties

--Description--

Name:

Type: Vented Box

Shape: Prism, square

--Box Parameters--

Vb = 4.6 cu.ft

V(total) = 5.082 cu.ft

Fb = 48 Hz

QL = 7

F3 = 52.35 Hz

Fill = normal

--Vents--

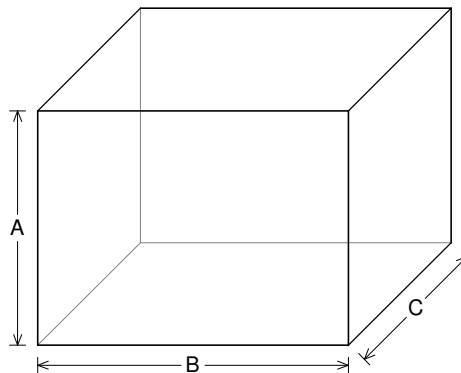
No. of Vents = 4

Vent shape = round

Vent ends = one flush

Dv = 4 in

Lv = 7.145 in



--External Dimensions--

A = 21.5 in

B = 28.5 in

C = 17.76 in

--Internal Dimensions--

A = 20 in

B = 27 in

C = 16.26 in

--Wall Thickness--

Front = 0.75 in

Side = 0.75 in

Driver Properties

--Description--

Name: Kappa Pro 18LF-8

Type: Standard one-way driver

Company: Eminence Speaker LLC USA

Comment: 18" Cast Frame Pro Woofer/Sub Woofer

--Configuration--

No. of Drivers = 1

--Mechanical Parameters--

Fs = 32.03 Hz

Qms = 10.66

Vas = 391.6 liters

Cms = 0.21 mm/N

Mms = 118.7 g

Rms = 2.24 kg/s

Xmax = 8 mm

Xmech = 18 mm

P-Dia = 382 mm

Sd = 1159 sq.cm

P-Vd = 0.917 liters

--Electrical Parameters--

Qes = 0.34

Re = 5.39 ohms

Le = 1.21 mH

Z = 8 ohms

BL = 19.39 Tm

Pe = 800 watts

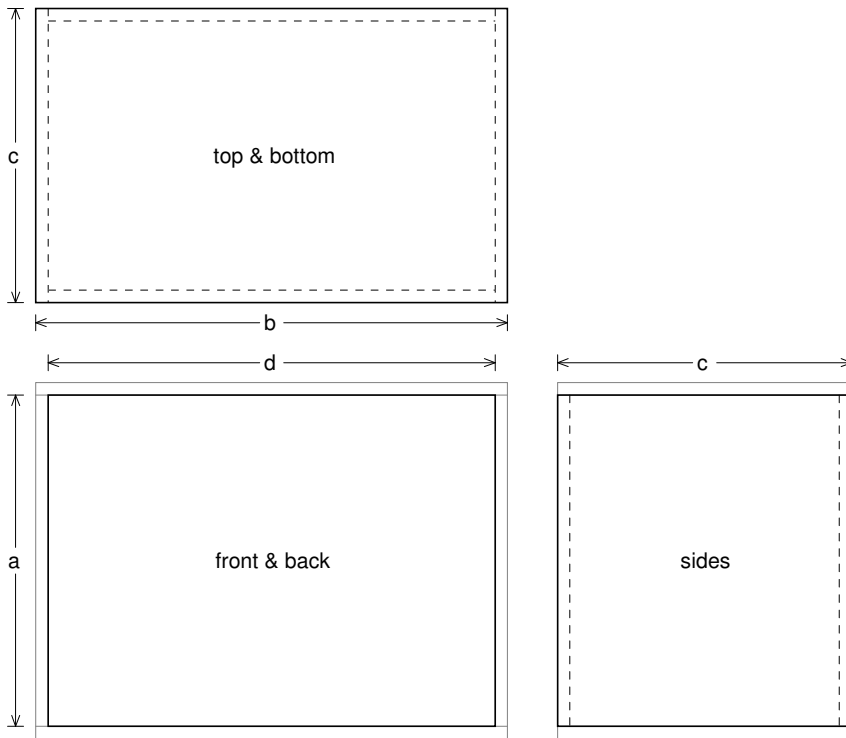
--Electromech. Parameters--

Qts = 0.33

no = 3.649 %

1-W SPL = 97.77 dB

2.83-V SPL = 99.48 dB



Box Parts

Box Shape: Square Prism

1 Top, 1 Bottom: depth (c) = 17.76 in
width (b) = 28.5, thickness = 0.75 in

1 Front, 1 Back: height (a) = 20 in
width (d) = 27, thickness = 0.75 in

2 Sides: height (a) = 20 in
depth (c) = 17.76, thickness = 0.75 in

--Vent Parts--

4 Ducts: outside diameter (e) = 4.25 in
inside diameter (g) = 4 in
length (h) = 7.145 in

--Driver Mounting--

Mounting: Flush

