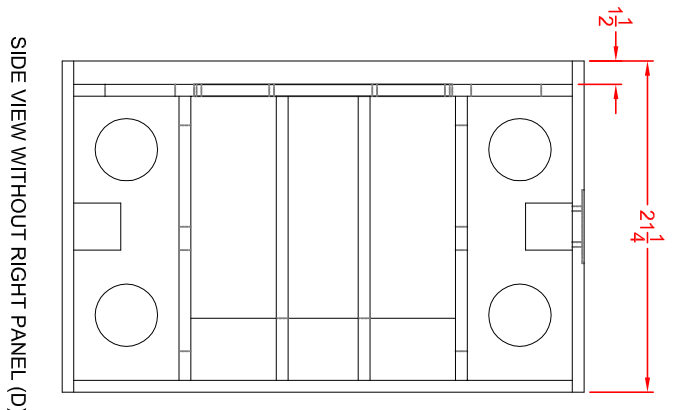
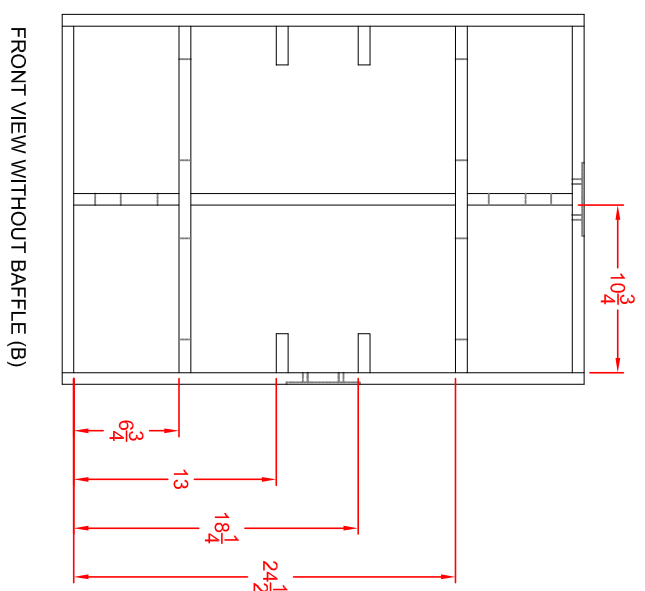
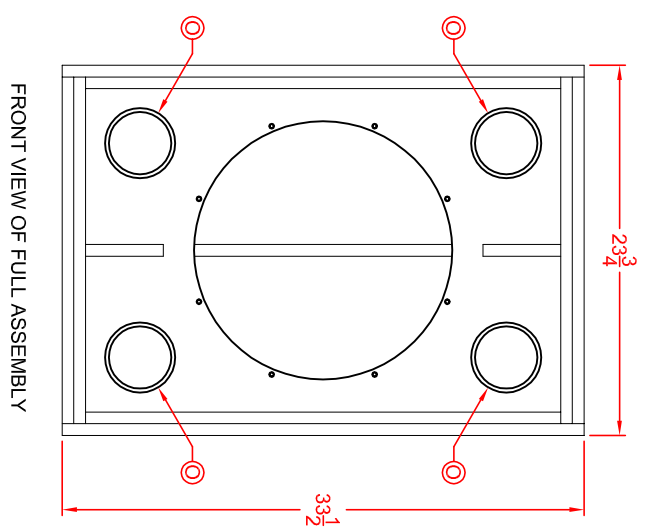
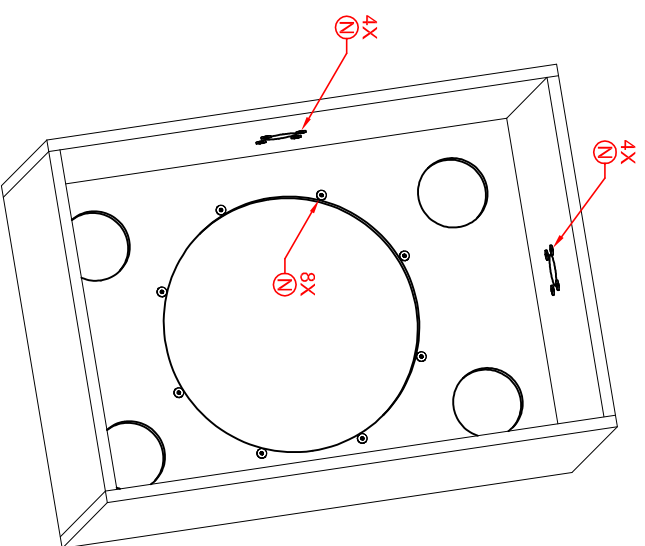


| DATE | SYM | REVISION RECORD | DR. | CK. | BY | REQ |
|------|-----|-----------------|-----|-----|----|-----|
| | | | | | | |
| | | | | | | |
| | | | | | | |

ANY REVISIONS TO THIS PRINT MUST BE CARRIED OUT ON PARENT MODEL

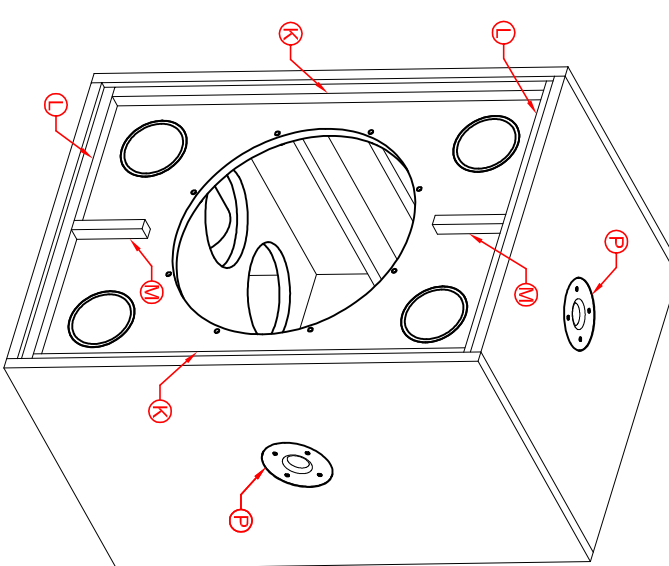
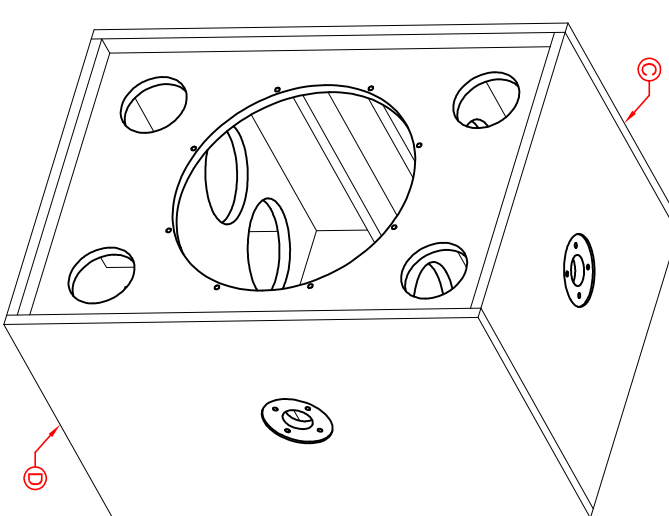
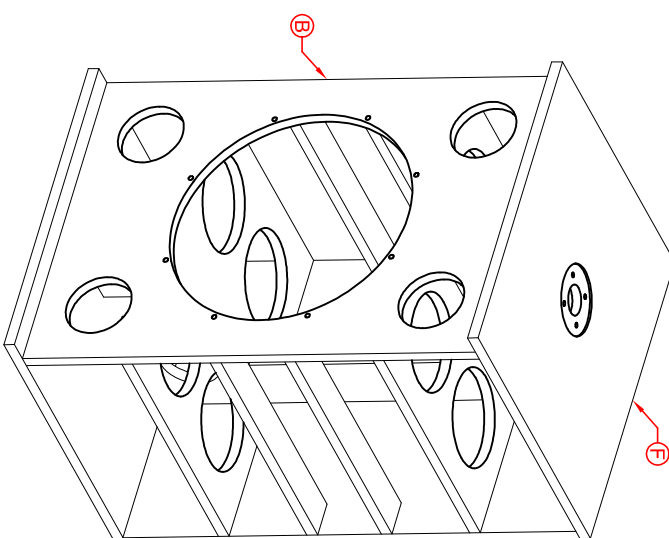
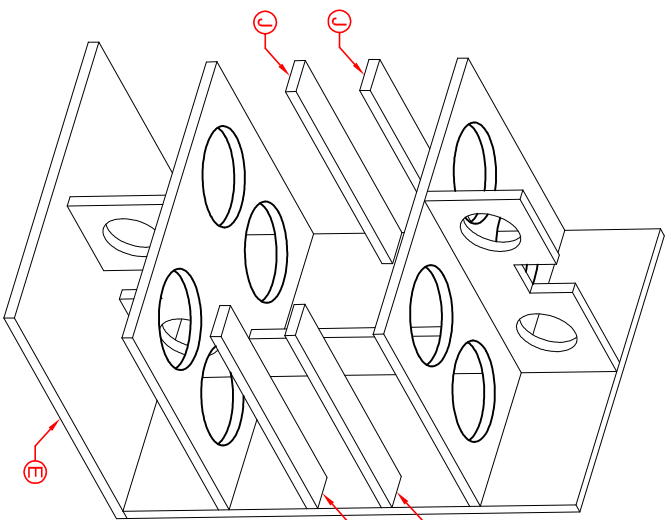
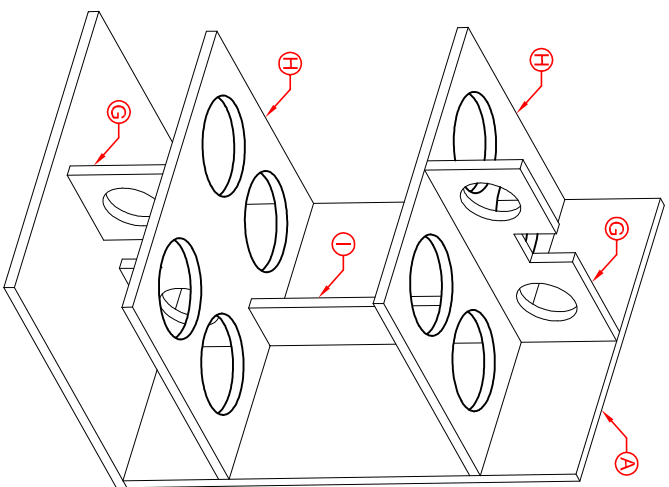


ISO BACK VIEW TO SHOW HURRICANE NUTS

FRONT VIEW OF FULL ASSEMBLY

FRONT VIEW WITHOUT BAFFLE (B)

SIDE VIEW WITHOUT RIGHT PANEL (D)



ASSEMBLY INSTRUCTIONS:

STEP 1: START WITH BACK PANEL (A) LAYING FLAT ON LEVEL SURFACE.

STEP 2: ASSEMBLE BRACE (H) TO BRACE (G) FOR BOTH TOP AND BOTTOM AS SHOWN.

STEP 3: ASSEMBLE BOTH BRACE SETS (G) AND (H) ALONG WITH BRACE (I) TO BACK PANEL (A) AS SHOWN.
(NOTE: EDGE OF BOTH BRACES (G) SHOULD BE FLUSH WITH EDGE ON EACH END OF BRACE (A) AS SHOWN.)

STEP 4: ASSEMBLE ALL (4) BRACE PANELS (J) TO BACK PANEL (A) AS SHOWN.

STEP 5: ASSEMBLE BOTTOM PANEL (E), THEN BAFFLE PANEL (B), AND THEN TOP PANEL (F) AS SHOWN.

STEP 6: ASSEMBLE LEFT PANEL (C) AND THEN RIGHT PANEL (D) AS SHOWN.

STEP 7: ASSEMBLE BOTH HORIZONTAL GRILL SUPPORTS (L), THEN BOTH VERTICAL GRILL SUPPORTS (K), AND THEN BOTH VERTICAL CENTER GRILL SUPPORTS (M) AS SHOWN

STEP 8: INSERT ALL (16) HURRICANE NUTS (N) FROM INSIDE THE CABINET AS SHOWN.

STEP 9: INSERT BOTH PENN ELCOM TOP HATS (P) IN TOP PANEL (F) AND RIGHT PANEL (D) AS SHOWN.

STEP 10: GLUE IN ALL (4) PORTS (O) WITH EPOXY ON BAFFLE (B).

DISCLAIMER:

This document contains confidential and proprietary information of Eminence Speaker L.L.C. and neither it nor the information contained therein shall be disclosed or duplicated or used by others without the express written consent of Eminence Speaker L.L.C.

Eminence Speaker L.L.C.
Eminence, KY

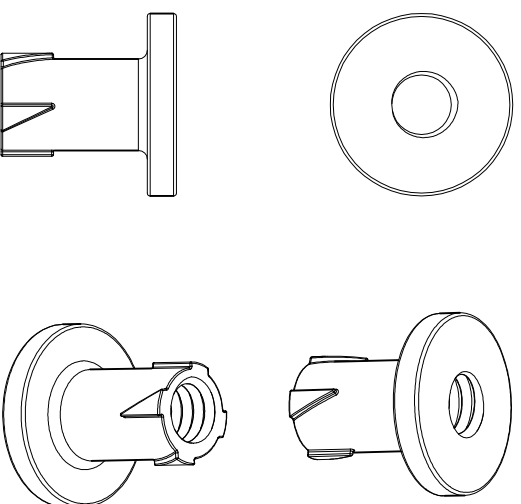
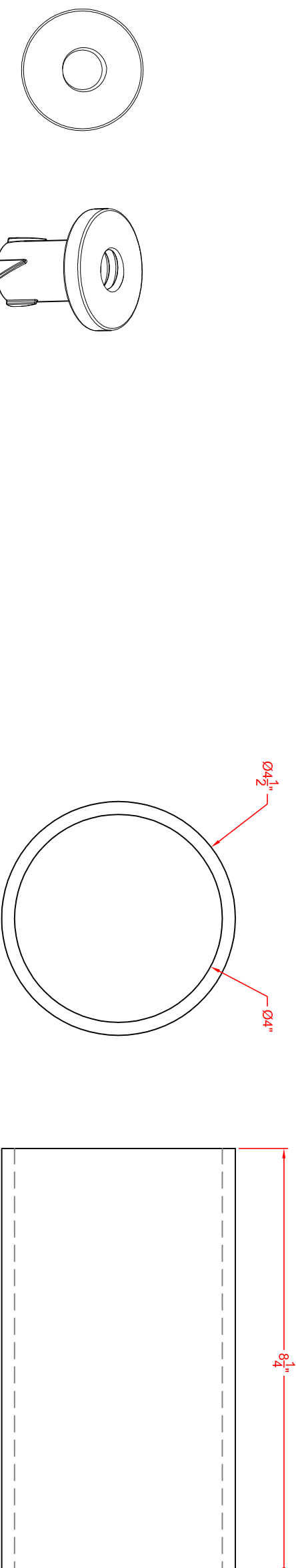
| TOLERANCES (EXCEPT AS NOTED) | | Drawing Units INCH/MILLIMETER] | Title 18" CABINET | Date Issue 3-24-15 |
|---------------------------------|---------------------------|-----------------------------------|----------------------|---|
| 2 PLC. DECIMAL INCHES ±0.01 | 1 PLC. DECIMAL [mm] ±0.3 | | | |
| 3 PLC. DECIMAL INCHES ±0.005 | 2 PLC. DECIMAL [mm] ±0.13 | ANGULAR ±2° | Scale 0.08 | Part / Dwg NO. KILOMAX 18 SUB ASSEMBLY |

ALL SAMPLES AND PRODUCTION QUANTITIES OF THIS COMPONENT MUST BE ROHS COMPLIANT

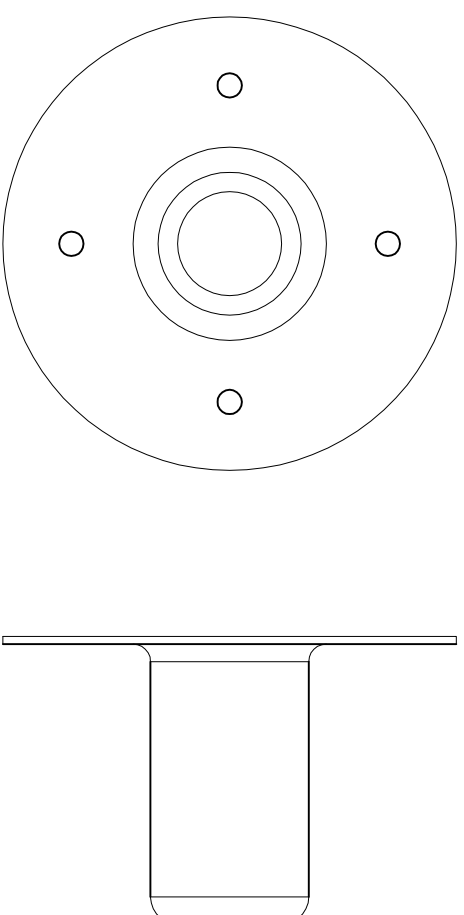


| DATE | SYM | REVISION RECORD | DR. | CK. | BY | REQ |
|------|-----|-----------------|-----|-----|----|-----|
| | | | | | | |
| | | | | | | |
| | | | | | | |

ANY REVISIONS TO THIS PRINT MUST BE CARRIED OUT ON PARENT MODEL



16X
HURRICANE NUT (N)
1/4"-20
SCALE 1.50
(PARTS EXPRESS # 081-1084)



2X
PENN ELCOM # M1551 (P)
TOP HAT FOR 1-3/8" STANDARD SPEAKER POLE
SOCKET DEPTH: 3"
(PARTS EXPRESS # 245-013)

DISCLAIMER:

This document contains confidential and proprietary information of Eminence Speaker L.L.C. and neither it nor the information contained therein shall be disclosed or duplicated or used by others without the express written consent of Eminence Speaker L.L.C.

ALL SAMPLES AND PRODUCTION QUANTITIES OF THIS COMPONENT MUST BE ROHS COMPLIANT

Eminence Speaker L.L.C.

Eminence, KY

Title

18" CABINET

Drawn By:

KYLE HEIGTCHHEW

Initiated By:

JERRY MCNUUTT

Date Issue

3-24-15

Scale

0.50

Part/Dwg NO.

KILOMAX 18 SUB PARTS

REV

TOLERANCES
(EXCEPT AS NOTED)

| 2 PLC. DECIMAL INCHES ±0.01 | 1 PLC. DECIMAL [mm] | 2 PLC. DECIMAL [mm] | 3 PLC. DECIMAL INCHES ±0.005 | ANGULAR ±2° |
|-----------------------------|---------------------|---------------------|------------------------------|-------------|
| ±0.3 | ±0.13 | ±0.13 | ±0.13 | ±2° |

Drawing Units
INCH/[MILLIMETER]

THIRD ANGLE PROJECTION



Scale

0.50

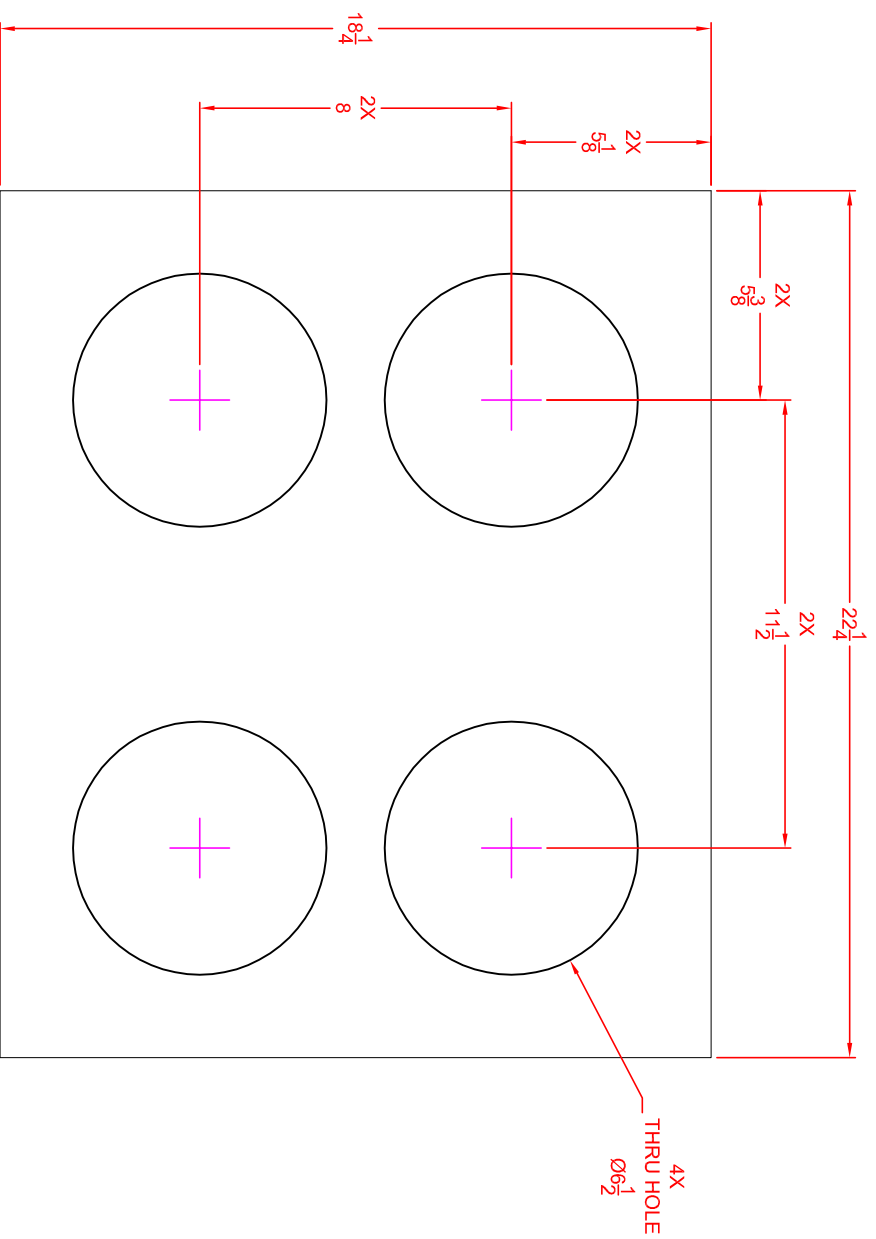
Part/Dwg NO.

KILOMAX 18 SUB PARTS

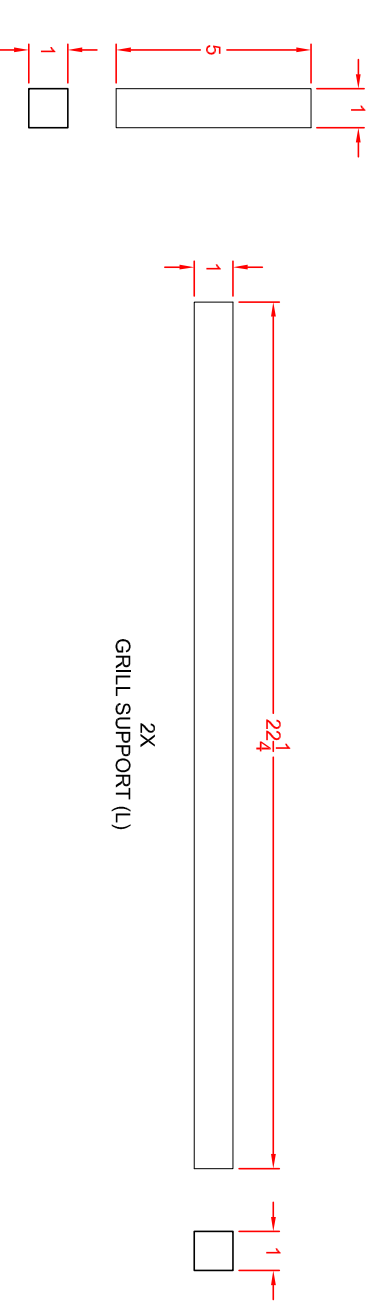
REV

| DATE | SYMBOL | REVISION RECORD | DR. | CK. | BY | REQ |
|------|--------|-----------------|-----|-----|----|-----|
| | | | | | | |
| | | | | | | |
| | | | | | | |

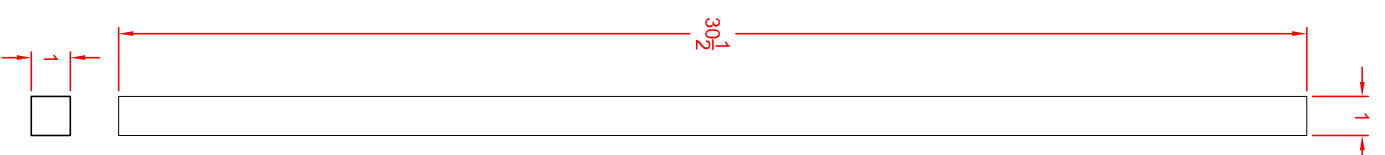
ANY REVISIONS TO THIS PRINT MUST BE CARRIED OUT ON PARENT MODEL



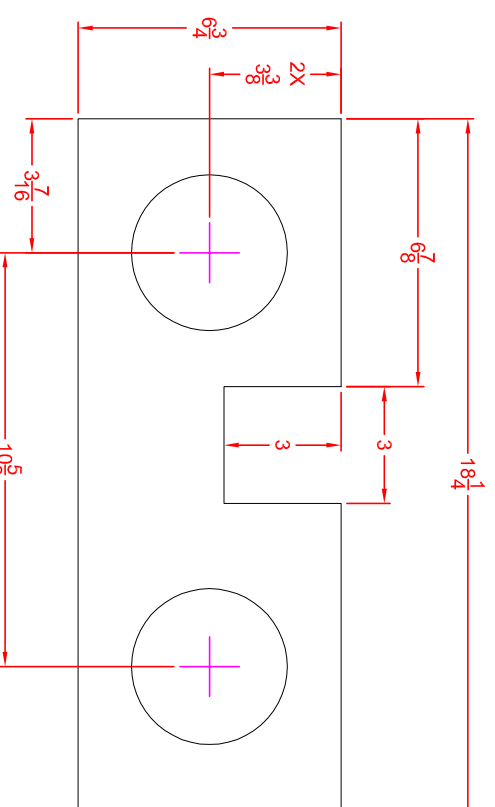
2X
BRACE (H)



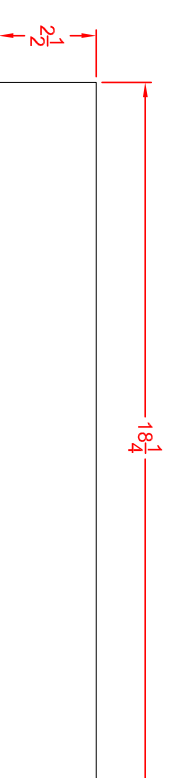
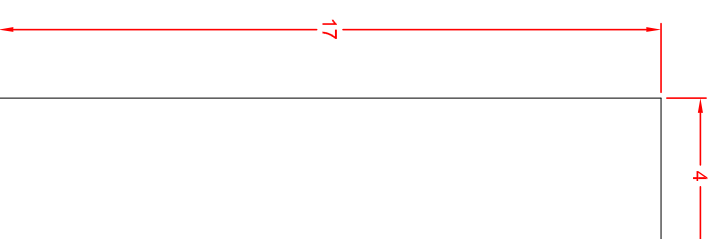
2X
GRILL SUPPORT (M)



2X
GRILL SUPPORT (K)



2X
BRACE (G)



DISCLAIMER:

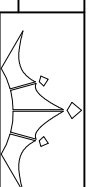
This document contains confidential and proprietary information of Eminence Speaker L.L.C. and neither it nor the information contained therein shall be disclosed or duplicated or used by others without the express written consent of Eminence Speaker L.L.C.

ALL SAMPLES AND PRODUCTION QUANTITIES OF THIS COMPONENT MUST BE ROHS COMPLIANT

Eminence Speaker L.L.C.
Eminence, KY

TOLERANCES
(EXCEPT AS NOTED)

| | |
|------------------------------|---------------------------|
| 2 PLC. DECIMAL INCHES ±0.01 | 1 PLC. DECIMAL [mm] ±0.3 |
| 3 PLC. DECIMAL INCHES ±0.005 | 2 PLC. DECIMAL [mm] ±0.13 |
| ANGULAR ±2° | |



18" CABINET
Emitted By: JERRY MCNUUTT

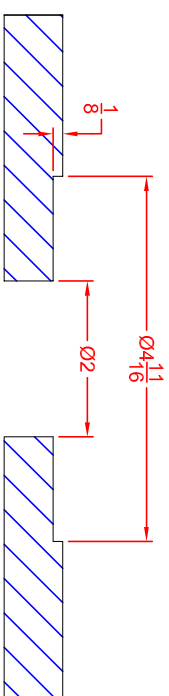
| | | |
|----------------------------------|---|--------------------------------|
| Drawing Units INCH/MILLIMETER | Title 18" CABINET | Date Issue 3-24-15 |
| THIRD ANGLE PROJECTION | Drawn By: KYLE HEIGTCHIEW | Initiated By: JERRY MCNUUTT |
| Scale 0.20 | Part / Dwg NO. KILOMAX 18 SUB BRACES | REV |

MATERIAL: 3/4" 13 PLY BAL TIC BIRCH PLYWOOD.

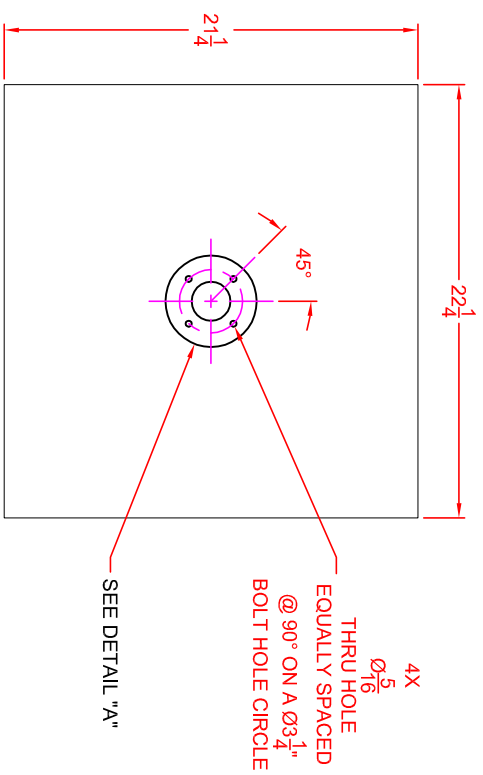
NOTE: ALL (6) GRILL SUPPORT PIECES ARE 1" THICK.

| DATE | SYMBOL | REVISION RECORD | DR. | CK. | BY | REQ |
|------|--------|-----------------|-----|-----|----|-----|
| | | | | | | |
| | | | | | | |
| | | | | | | |

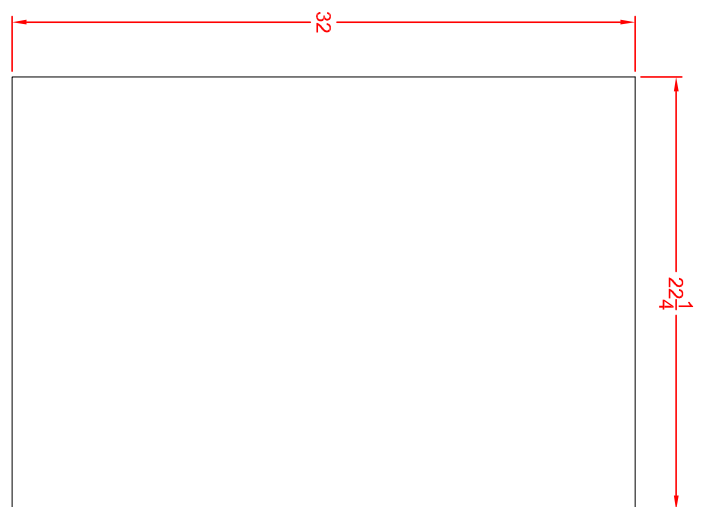
ANY REVISIONS TO THIS PRINT MUST BE CARRIED OUT ON PARENT MODEL



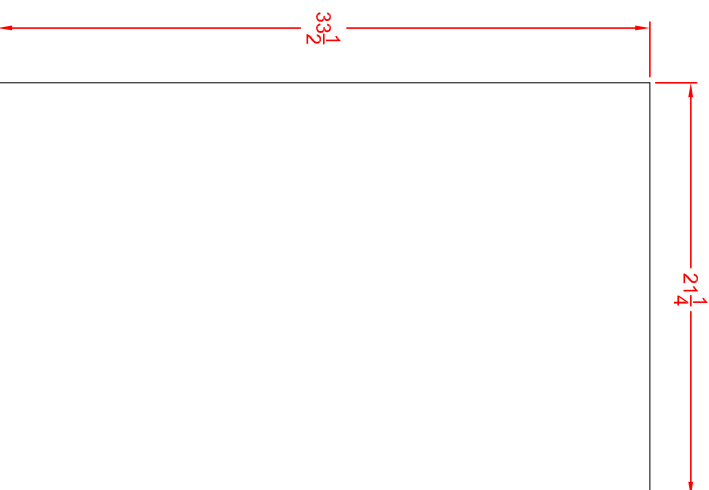
DETAIL "A"
SCALE 0.40



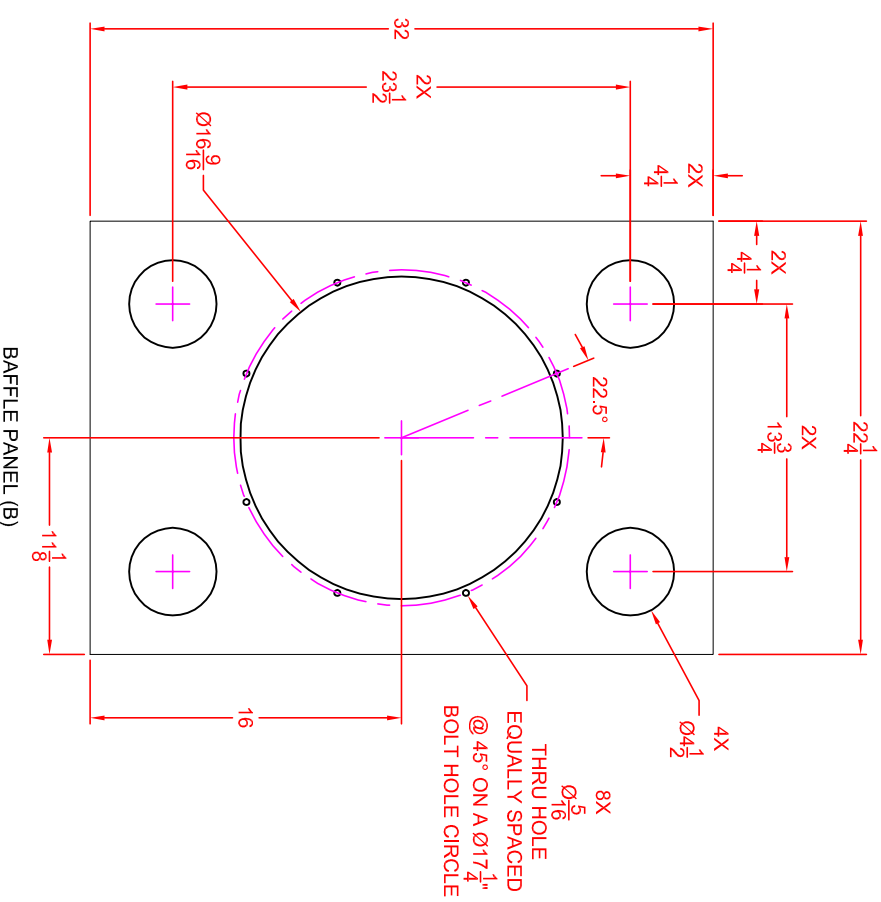
TOP PANEL (F)



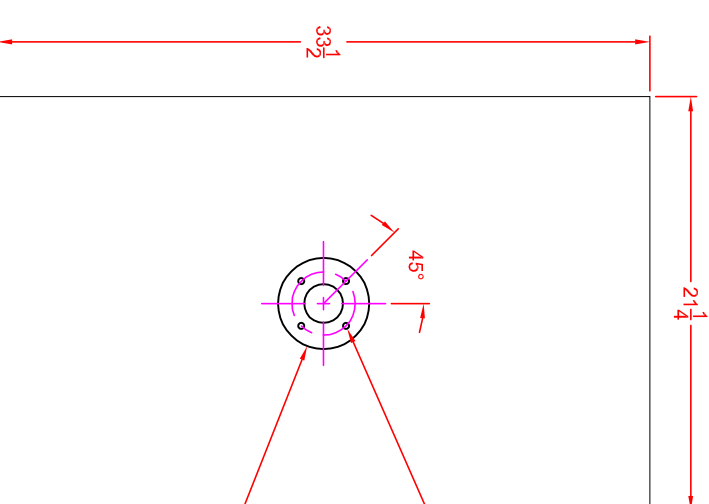
BACK PANEL (A)



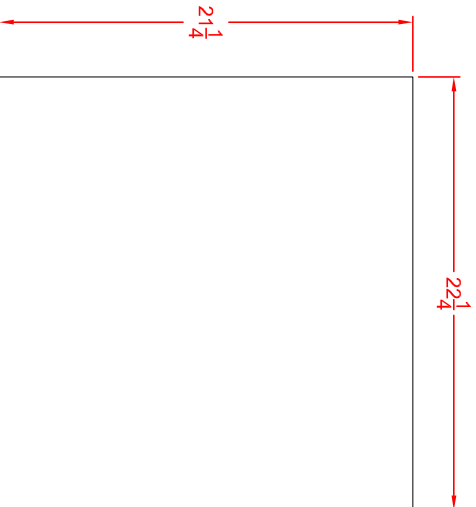
LEFT PANEL (C)



BAFFLE PANEL (B)



RIGHT PANEL (D)



BOTTOM PANEL (E)

MATERIAL: 3/4" 13 PLY BAL TIC BIRCH PLYWOOD.

DISCLAIMER:

This document contains confidential and proprietary information of Eminence Speaker L.L.C. and neither it nor the information contained therein shall be disclosed or duplicated or used by others without the express written consent of Eminence Speaker L.L.C.

ALL SAMPLES AND PRODUCTION QUANTITIES OF THIS COMPONENT MUST BE ROHS COMPLIANT

Eminence Speaker L.L.C.

Eminence, KY

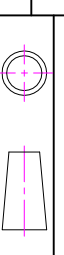


Drawing Units
INCH/MILLIMETER

Title
18" CABINET

THIRD ANGLE PROJECTION

Drawn By: KYLE HEIGTCHHEW
Initiated By: JERRY MCNUJT



Scale: 0.10
Part / Dwg NO. KILOMAX 18 SUB PANELS
Date Issue: 3-24-15
REV