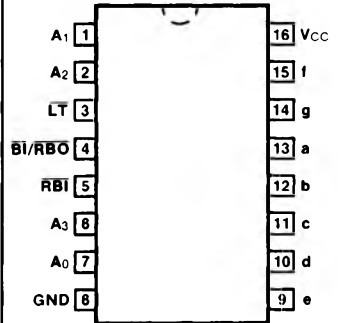


54LS/74LS249

BCD TO 7-SEGMENT DECODER

(With Open-Collector Outputs)

CONNECTION DIAGRAM PINOUT A

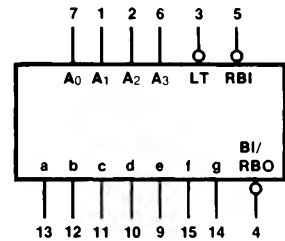


DESCRIPTION — The 'LS249 has active HIGH open-collector outputs and is the 16-pin version of the 14-pin 'LS49. The 'LS249 incorporates the Lamp Test and BI/RBO inputs that are omitted in the 'LS49. Additionally, the 'LS249 will light the top bar (segment a) for numeral 6 and the bottom bar (segment d) for numeral 9. For detailed description and specifications please refer to the 'LS49 data sheet.

ORDERING CODE: See Section 9

PKGS	PIN OUT	COMMERCIAL GRADE	MILITARY GRADE	PKG TYPE
		V _{CC} = +5.0 V ±5%, T _A = 0°C to +70°C	V _{CC} = +5.0 V ±10%, T _A = -55°C to +125°C	
Plastic DIP (P)	A	74LS249PC		9B
Ceramic DIP (D)	A	74LS249DC	54LS249DM	6B
Flatpak (F)	A	74LS249FC	54LS249FM	4L

LOGIC SYMBOL



V_{CC} = Pin 16
GND = Pin 8

INPUT LOADING/FAN-OUT: See Section 3 for U.L. definitions

PIN NAMES	DESCRIPTION	54/74LS (U.L.) HIGH/LOW
A ₀ — A ₃	BCD Inputs	0.5/0.25
<u>BI</u>	Blanking Input (Active LOW)	0.5/0.25
<u>LT</u>	Lamp Test Input (Active LOW)	0.5/0.25
<u>BI/RBO</u>	Blanking Input (Active LOW) or Ripple Blanking Output (Active LOW)	0.5/0.25 1.25/2.0 (1.0)
a — g	Segment Outputs (Active HIGH)	OC*/5.0 (2.5)

*OC — Open Collector