

REFER TO PAGE 14 FOR P, N AND Y PACKAGE PIN CONFIGURATIONS.

DIGITAL 8000 SERIES TTL/MSI

DESCRIPTION

The 8260 Arithmetic Logic Element is a monolithic gate array incorporating four full-adders structured in a look-ahead mode. The device may be used as four mutually independent exclusive NOR or AND gates by proper addressing of the inhibit lines.

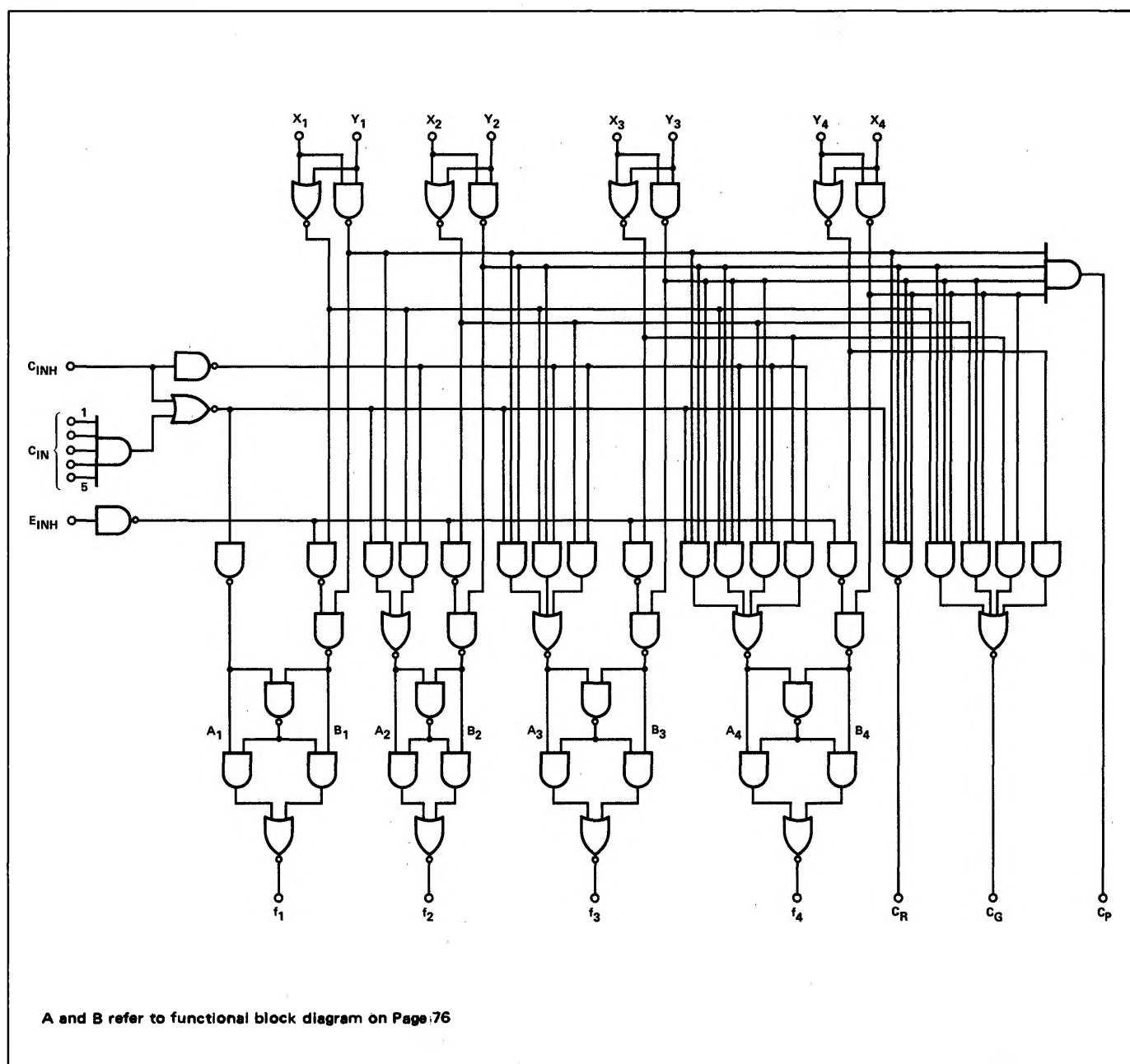
As a four-bit adder, the 8260 permits high speed parallel addition of four sets of data and features both simultaneous addition on a character to character and on a bit to bit basis

within the package.

When true input variables are used, the true sum is formed at the f output. Inverted input variables produce the complement of the sum of the true variables.

The carry-outs available are: Internally Generated (C_G); Propagated (C_P); and Ripple (C_R). This gives the 8260 complete flexibility when used in Ripple Carry or Anticipated Carry Adder Systems.

LOGIC DIAGRAM



ELECTRICAL CHARACTERISTICS (Over Recommended Operating Temperature And Voltage)

CHARACTERISTICS	LIMITS				TEST CONDITIONS					OUTPUT TERMINALS (mA)				NOTES	
					INPUT TERMINALS										
	MIN.	TYP.	MAX.	UNITS	X _n	Y _n	C _{IN}	C _{INH}	E _{INH}	C _p	C _G	C _R	f _n		
"1" Output Voltage	2.6	3.5		V	2.0	2.0	2.0	2.0	2.0			-0.8	-0.8	-0.8	1
"0" Output Voltage															
f _n , C _G and C _R			0.4	V	0.8	0.8	0.8	0.8	0.8			9.6	9.6	9.6	2
"0" Input Current															
X _n and C _{INH}	-0.1		-3.2	mA	0.4	5.25		0.4							
Y _n	-0.1		-3.2	mA	5.25	0.4									
E _{INH} & C _{IN1} , through C _{IN5}	-0.1		-1.6	mA			0.4		0.4						3
"1" Input Current															
X _n and C _{INH}			80	μA	4.5	0V		4.5							
Y _n			80	μA	0V	4.5									
E _{INH} & C _{IN1} , through C _{IN5}			40	μA			4.5		4.5						4
Input Latch Voltage															
X _n and C _{INH}	5.5			V	10mA	0V		10mA							
Y _n	5.5			V	0V	10mA									
E _{INH} & C _{IN1} , through C _{IN5}	5.5			V			10mA		10mA						4
Power/Current Consumption			400/ 76.2	600/ 114.1	mW/ mA										15

T_A = 25° C and V_{CC} = 5.0V

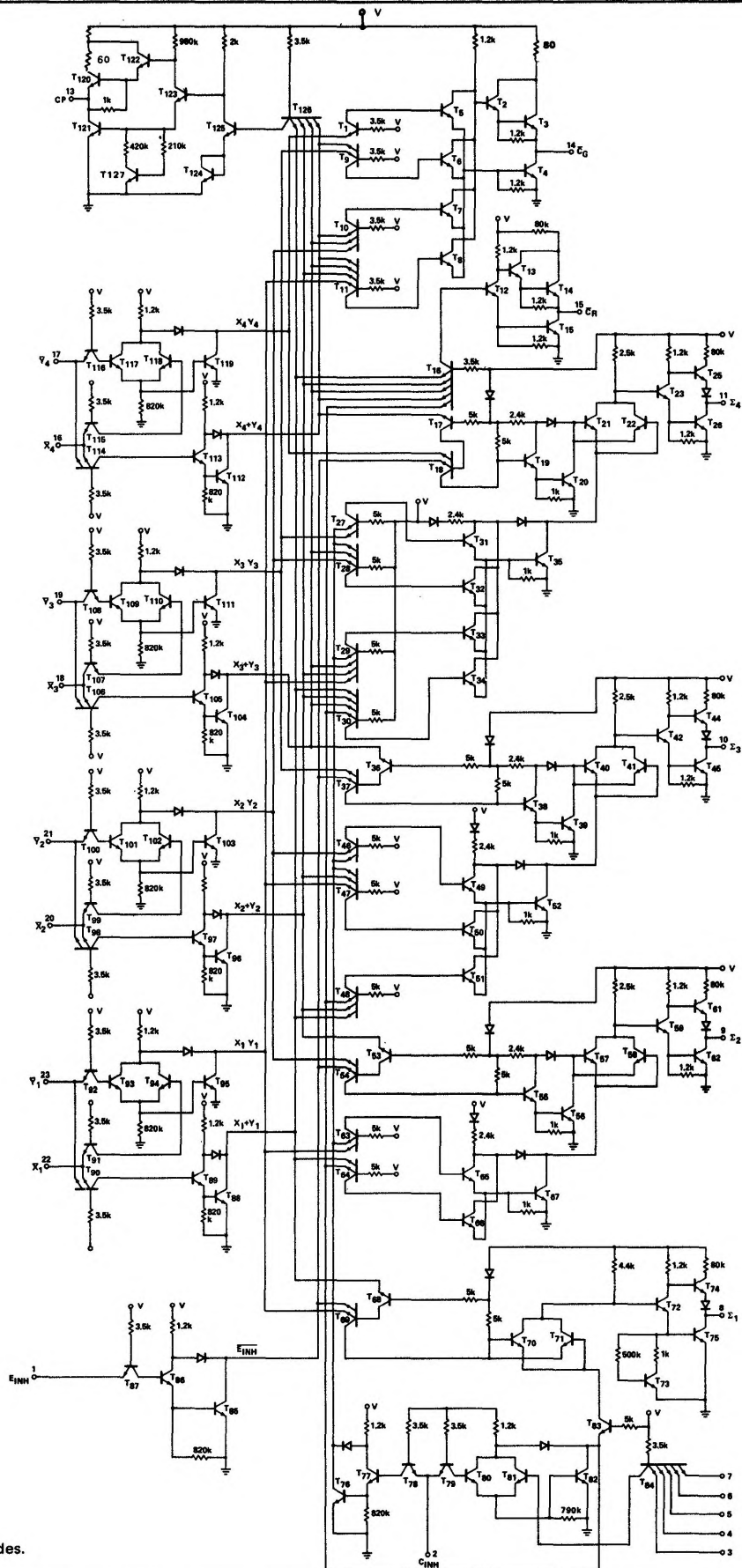
CHARACTERISTICS	LIMITS				TEST CONDITIONS					OUTPUT TERMINALS (mA)				NOTES
					INPUT TERMINALS									
	MIN.	TYP.	MAX.	UNITS	X _n	Y _n	C _{IN}	C _{INH}	E _{INH}	C _p	C _G	C _R	f _n	
Propagation Delay														
X _n , Y _n and C _{IN} to C _R		14	20	ns										14
X _n and Y _n to C _p and C _G		14	20	ns										14
X _n and Y _n to f _n		24	33	ns										14
C _{IN} to f _n		14	22	ns										14
Output Short Circuit Current														
f _n , C _G and C _R	-20		-70	mA	5.0	5.0	5.0	5.0	5.0		0V	0V	0V	13
C _p	-40		-90	mA	0V					0V				

NOTES:

- Output source current is supplied through a resistor to ground.
- Output sink current is supplied through a resistor to V_{CC}.
- When testing for separate C_{IN} inputs, tie the remaining C_{IN} inputs to V_{CC}.
- When testing for separate C_{IN} inputs, tie the remaining C_{IN} inputs to ground.
- Keep unused inputs tied to V_{CC} unless otherwise specified.
- All voltage and capacitance measurements are referenced to the ground terminal.
- All measurements are taken with ground pin tied to "0" volts.
- Positive current flow is defined as into the terminal referenced.

- Positive logic definition:
"UP" Level = "1", "DOWN" Level = "0".
- Precautionary measures should be taken to ensure current limiting in accordance with Absolute Maximum Ratings should the isolation diodes become forward biased.
- Manufacturer reserves the right to make design and process changes and improvements.
- Input latch voltage test guarantees operation free of input latch-up over the specified operating power supply voltage range.
- Ground one output at a time.
- Measure switching times at 1.5 volt level.
- V_{CC} = 5.25V.

SCHEMATIC DIAGRAM



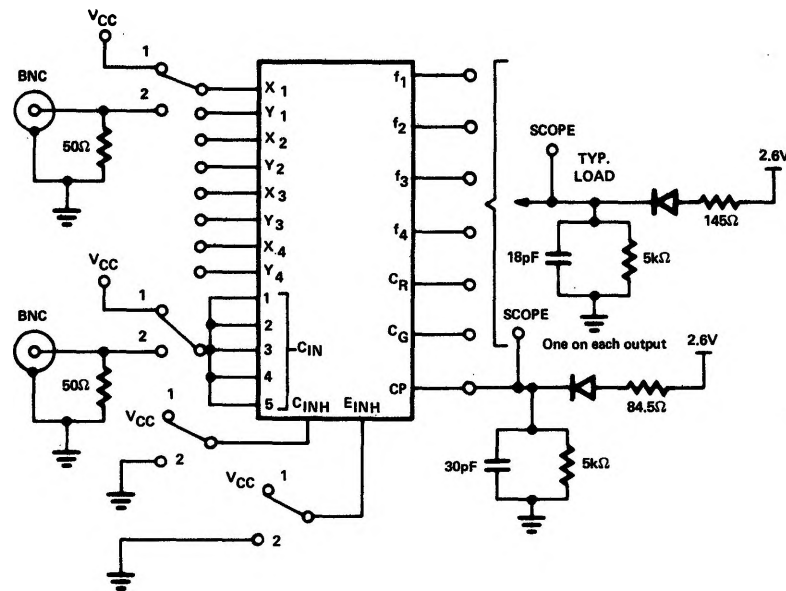
8260 - 4 BIT ADDER

V_{CC} = Pin 24

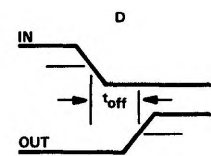
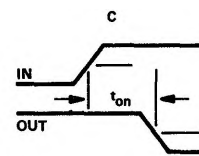
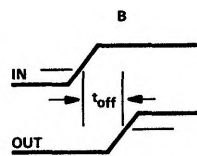
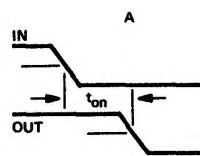
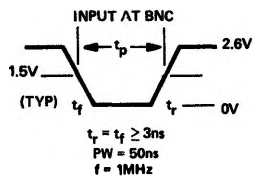
GND = Pin 12

All inputs have clamp diodes.

AC TEST FIGURE AND WAVEFORMS



NOTE: Scope terminals to be $\leq \frac{1}{8}$ " from Package Pins.



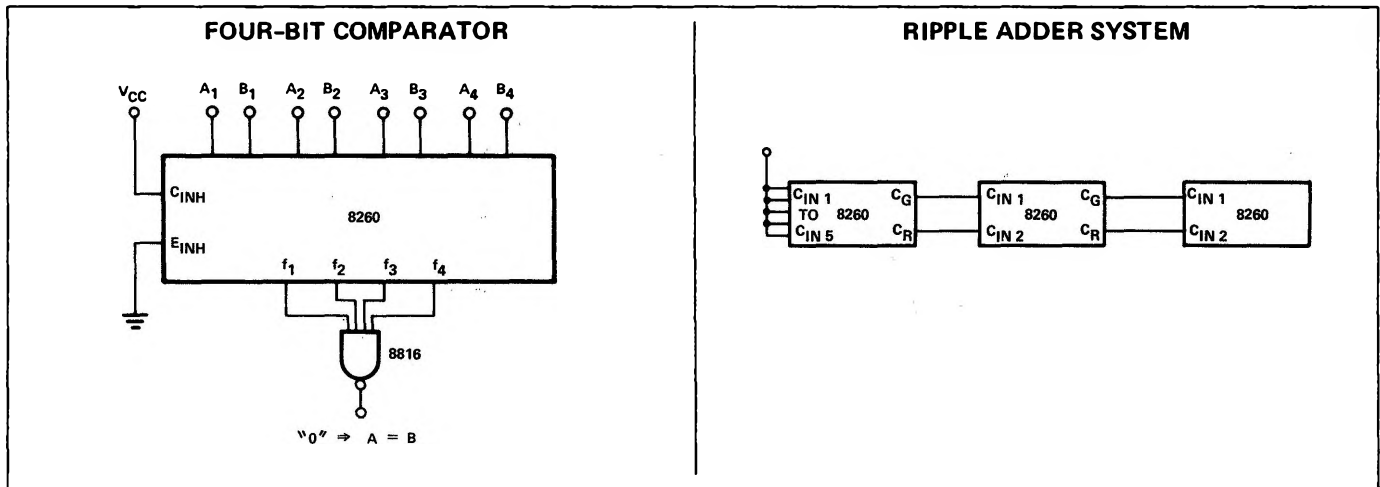
STEP NO.	DELAY FROM-TO	SWITCH POSITION												WAVEFORM TYPE	
		DRIVEN INPUTS	OTHER INPUTS												
			X ₁	Y ₁	X ₂	Y ₂	X ₃	Y ₃	X ₄	Y ₄	C _{IN}	E _{INH}	C _{INH}		
1	X _n to C _R or X _n to C _p	2	2	1	2	1	2	1	2	1	2	2	2	A, B C, D	
2	Y _n to C _R or Y _n to C _p	2	1	2	1	2	1	2	1	2	2	2	2	A, B C, D	
3	X _n , Y _n to f _n	2	1	1	1	1	1	1	1	1	1	1	1	A, B	
4	C _{IN} to C _R	2	2	2	2	2	2	2	2	2	2	2	2	A, B	
5	C _{IN} to f _n	2	1	2	1	2	1	2	1	2	2	2	2	C, D	

TYPICAL APPLICATIONS

The 8260 contains the control logic necessary to allow operation as a general purpose arithmetic logic device. Below, the internal carries are inhibited to effect Exclusive-NOR or coincidence operation. The 8260 may also be operated as four independent

AND gates to implement masking and similar requirements of micro-programming.

The Ripple Adder System is the simplest but also the slowest application of the 8260. The typical total addition time (input to sum output for 12-bit ripple adder is 42ns).



The Fast Adder System provides complete carry look-ahead addition for words to 24 bits in length and is the fastest application of

the 8260 units. The typical total addition time for a 24 bit fast adder is 42ns.

