

# AN2125FHS

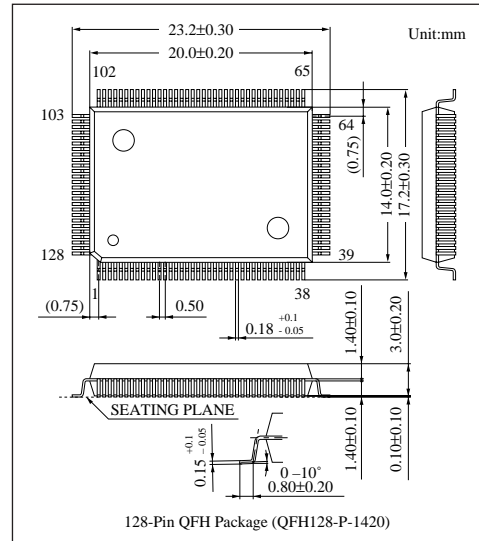
## NTSC/PAL signal processor IC for 510H color CCD camera

### ■ Overview

The AN2125FHS is a CCD camera video signal processor IC featuring luminance and color-difference signals processing, and encoding, Y/C mixing, 75-Ω driver output, and subcarrier generation. It also includes an automatic white balance control circuit, an operational amplifier for AGC, a DAC for adjustment, and a circuit that automatically reads the EEPROM at the instance of power-on. Together with only an external EEPROM, you can make all signal processing system without a microprocessor.

### ■ Features

- Supports 510H CCDs (250,000 pixels)
- Compatible with both NTSC and PAL
- Built-in FH lock system for subcarrier generation
- Built-in automatic EEPROM read-in circuit at power-on instance.
- Built-in adjustment DAC (8 bits, 32 channels)
- Built-in external synchronization circuit
- Built-in comparator to provide for an electronic iris



### ■ Absolute Maximum Ratings

Parameter	Symbol	Rating	Unit
Supply voltage	$V_{CC}$	$V_{CC1}=5.5$	V
Supply current	$I_{CC}$	$I_{CC1(156)}=170$	mA
Power dissipation <sup>Note 2)</sup>	$P_D$	876	mW
Operating ambient temperature <sup>Note 1)</sup>	$T_{opr}$	-20 to +70	°C
Storage temperature <sup>Note 1)</sup>	$T_{stg}$	-55 to +150	°C

Note 1)  $T_a=25^{\circ}\text{C}$  for other than operating ambient and storage temperatures.

Note 2) Allowable power dissipation of the package at  $T_a=70^{\circ}\text{C}$ .

### ■ Recommended Operating Range ( $T_a=25^{\circ}\text{C}$ )

Parameter	Symbol	Range
Operating supply voltage range	$V_{CC}$	4.5 to 5.1V