

Preset equalizer sound control (P.S.C) IC

BA3842F

The BA3842F is a preset graphic equalizer IC with dynamic bass boost which is designed for audio equipment.

●Applications

Mini-component stereos

Micro-component stereos

Radio cassette recorders with CD

●Features

- 1) Includes preset equalizer function with five equalizer positions and a flat mode setting.
- 2) Built-in dynamic bass boost with gain settings from 0 to 20dB in steps of 5dB.
- 3) Low distortion and low noise.
- 4) Built-in dynamic bass boost and interlocked ALC (Auto Level Control).

●Absolute maximum ratings (Ta = 25°C)

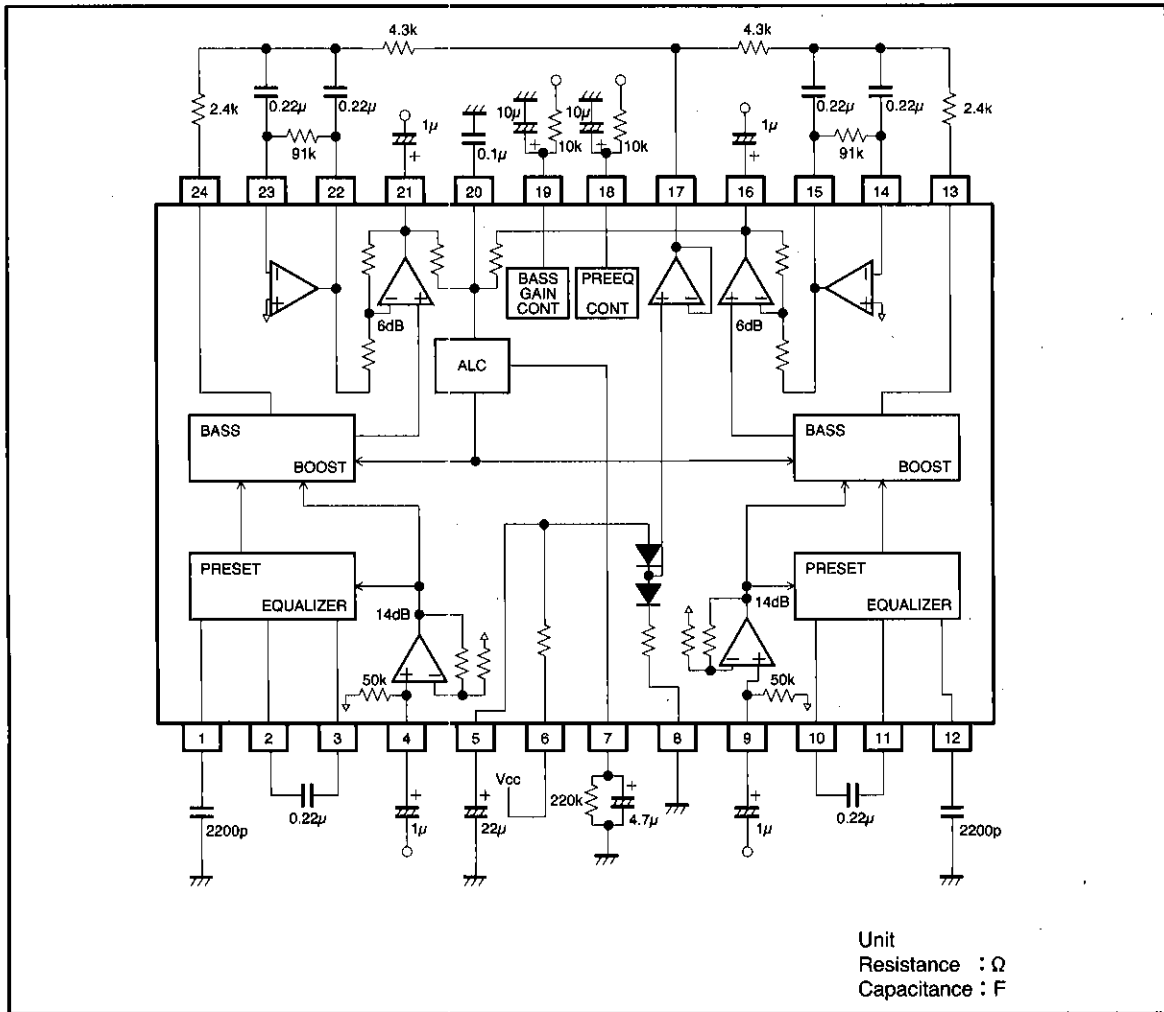
Parameter	Symbol	Limits	Unit
Applied voltage	V _{CC}	11.0	V
Power dissipation	P _d	550*	mW
Operating temperature	T _{opr}	-40~+85	°C
Storage temperature	T _{stg}	-55~+125	°C

* When used above Ta = 25°C decreases 5.5 mW per degree.

●Recommended operating conditions

Parameter	Symbol	Limits	Unit
Supply voltage	V _{CC}	8.0~10.5	V

● Block diagram



● Pin description

Pin No.	Name	Function
1	HPFL	Left channel preset equalizer high band filter
2	LPFL2	Left channel preset equalizer low band filter
3	LPFL1	Left channel preset equalizer low band filter
4	LIN	Left channel input
5	FILTER	Filter
6	Vcc	Voltage supply
7	ALCC	ALC time constant
8	GND	Ground
9	RIN	Right channel input
10	LRFR1	Right channel preset equalizer low band filter
11	LRFR2	Right channel preset equalizer low band filter
12	HPFR	Right channel preset equalizer high band filter

Pin No.	Name	Function
13	BAR1	Right channel dynamic bass boost filter
14	BAR2	Right channel dynamic bass boost filter
15	BAR3	Right channel dynamic bass boost filter
16	ROUT	Right channel output
17	BIAS	Bias
18	SWGE	preset equalizer mode switch
19	SWTB	Bass boost mode switch
20	CAP	ALC band setting filter
21	LOUT	Left channel output
22	BAL3	Left channel dynamic bass boost filter
23	BAL2	Left channel dynamic bass boost filter
24	BAL1	Left channel dynamic bass boost filter

● Input/output circuit

Symbol	Number	Equivalent circuit	Description
HPFL HPFR	1 pin 12pin		Pin for setting the high cutoff frequency of the preset graphic equalizer. fC is set by adding a capacitor between the pin and a bias or ground.
LPFL2 LPFR2	2 pin 11pin		Pin for setting the low cutoff frequency of the preset graphic equalizer. fC is set by adding a capacitor between this pin and LPFL1/LPFR1.
LPFL1 LPFR1	3 pin 10pin		Pin for setting the low cutoff frequency of the preset graphic equalizer. fC is set by adding a capacitor between this pin and LPFL2/LPFR2.
LIN RIN	4 pin 9 pin		Signal input pin. Design the circuit for an input impedance of 50 kxxx (typ.).
FILTER	5 pin		Filter input pin. This will be approximately $1/2V_{CC} + 0.7 V$. Connect a $10 \mu F$ capacitor to this pin. Discharge and precharge circuits are built in, however, they will not be affected by the external capacitor.

Symbol	Number	Equivalent circuit	Pin description
ALCC	7pin		Pin for setting the ALC time constant. Attack time and release time are set with an external resistor and capacitor.
BAR1 BAL1	13pin 24pin		Pin for connecting the dynamic bass boost filter. ※ See "Precautions".
BAR2 BAL2	14pin 23pin		Pin for connecting the dynamic bass boost filter. This pin has a high impedance, therefore, pattern wire should be short and direct. ※ See "Precautions".
BAR3 BAL3	15pin 22pin		Pin for connecting the dynamic bass boost filter.
ROUT LOUT	16pin 21pin		Signal output pin.

Preset graphic equalizers

Audio accessory components

Symbol	Number	Equivalent circuit	Pin description
BIAS	17pin		<p>Bias output pin. When using a bias, the pattern wire should be close to the pin to reduce the impedance of the wire.</p>
SWGE	18pin		<p>Mode switch for preset graphic equalizer.</p>
SWTB	19pin		<p>Gain switch for dynamic bass boost.</p>
CAP	20pin		<p>Pin for setting the ALC band. Set the impedance of this pin at 10 kΩ (typ.).</p>
VCC	6pin		<p>Supply voltage pin.</p>
GND	8pin		<p>Ground pin.</p>

- Electrical characteristics (unless otherwise indicated, $T_a = 25^\circ\text{C}$, $V_{CC} = 10\text{V}$, $f = 1\text{kHz}$, $V_{in} = 200\text{mVrms}$, preset equalizer--normal : $R_g = 620\ \Omega$, during dynamic bass boost : $R_L = 10\text{k}\ \Omega$)

Parameter	Symbol	Min.	Typ.	Max.	Unit	Conditions
Quiescent current consumption	I_Q	—	7	17	mA	Not designed to be radiation resistant.
Maximum output voltage	V_{om}	2.4	2.8	—	Vrms	THD=1%
Output voltage gain	Gv	18	20	22	dB	
Total harmonic distortion	THD	—	0.01	0.05	%	$f=1\text{kHz}$, BW : 400Hz~300kHz
Output noise voltage	V_{no}	—	17	35	μVrms	$R_g=0$, DIN AUDIO*
Crosstalk	CT	—	-70	-60	dB	$f=1\text{kHz}$
Input impedance	R_{IN}	35	50	65	k Ω	
Ripple rejection	RR	—	-41	-35	dB	$f_r=100\text{Hz}$, $V_{rIN}=100\text{mVrms}$
Channel balance	CB	-1.5	0	1.5	dB	
◎Dynamic bass boost						
Boost level 1	BB1	3	5	7	dB	$f=60\text{Hz}$ $V_{IN}=56\text{mVrms}$
Boost level 2	BB2	8	10	12	dB	$f=60\text{Hz}$, TH1 $V_{IN}=30\text{mVrms}$
Boost level 3	BB3	13	15	17	dB	$f=60\text{Hz}$, TH2 $V_{IN}=18\text{mVrms}$
Boost level 4	BB4	18	20	22	dB	$f=60\text{Hz}$, TH3 $V_{IN}=10\text{mVrms}$
Switch control voltage 0	TH0	—	0	0.3	V	No bass boost
Switch control voltage 1	TH1	1.0	1.3	1.6	V	Boost level 1 position
Switch control voltage 2	TH2	2.5	3.0	3.5	V	Boost level 2 position
Switch control voltage 3	TH3	4.5	5.0	5.5	V	Boost level 3 position
Switch control voltage 4	TH4	6.5	7.0	10	V	Boost level 4 position
◎Preset equalizer						
Switch control voltage F	TH_F	—	0	0.3	V	FLAT
Switch control voltage R	TH_R	1.0	1.3	1.6	V	ROCK
Switch control voltage P	TH_P	2.5	3.0	3.5	V	POP
Switch control voltage J	TH_J	4.2	5.0	5.5	V	JAZZ
Switch control voltage C	TH_C	6.5	7.0	7.5	V	CLASSIC
Switch control voltage B	TH_B	8.5	9.0	10	V	BGM

* Measurement performed using Matsushita Communication Industrial VP-9690A DIN Audio filter (average value wave detection, effective value display).

Operating specifications

Input and output signal pins are in phase.

◎Not designed for radiation resistance.

- Reference values for application circuit example (unless otherwise indicated, $T_a = 25^\circ\text{C}$, $V_{CC} = 10\text{V}$, $V_{in} = 200\text{mV}_{rms}$, preset equalizer--normal : $R_g = 620\ \Omega$, during dynamic bass boost : $R_L = 10\text{k}\ \Omega$)

Parameter	Symbol	Typ.	Unit	Conditions
⊙Preset equalizer				
ROCK Low range	G_{VRL}	25	dB	$f=100\text{Hz}$ TH_R
ROCK High range	G_{VRH}	25	dB	$f=10\text{Hz}$ TH_R
POP Low range	G_{VPL}	19	dB	$f=100\text{Hz}$ TH_P
POP Mid-range	G_{VPM}	23	dB	$f=1\text{kHz}$ TH_P
POP High range	G_{VPH}	20	dB	$f=10\text{kHz}$ TH_P
JAZZ Low range	G_{VJL}	23	dB	$f=100\text{Hz}$ TH_J
JAZZ High range	G_{VJH}	23	dB	$f=10\text{kHz}$ TH_J
CLASSIC Low range	G_{VCL}	23	dB	$f=100\text{Hz}$ TH_C
CLASSIC High range	G_{VCH}	19	dB	$f=10\text{kHz}$ TH_C
BGM Low range	G_{VBL}	19	dB	$f=100\text{Hz}$ TH_B
BGM High range	G_{VBH}	18	dB	$f=10\text{kHz}$ TH_B
Output noise voltage	ROCK	V_{NOR}	32	μV_{rms} $R_g=0$ TH_R DIO AUDIO*
	POP	V_{NOP}	18	μV_{rms} $R_g=0$ TH_R DIO AUDIO*
	JAZZ	V_{NOJ}	25	μV_{rms} $R_g=0$ TH_J DIO AUDIO*
	CLASSIC	V_{NOC}	21	μV_{rms} $R_g=0$ TH_C DIO AUDIO*
	BGM	V_{NOB}	17	μV_{rms} $R_g=0$ TH_B DIO AUDIO*
Output level when ALC on	V_{OAGC}	1.3	V _{rms}	During dynamic bass boost, $f=60\text{Hz}$ $V_{IN}=130\text{mV}_{rms}$

* Measurement performed using Matsushita Communication Industrial VP-9690A DIN Audio filter (average value wave detection, effective value display).

Operating specifications

Input and output signal pins are in phase.

● Measurement circuit

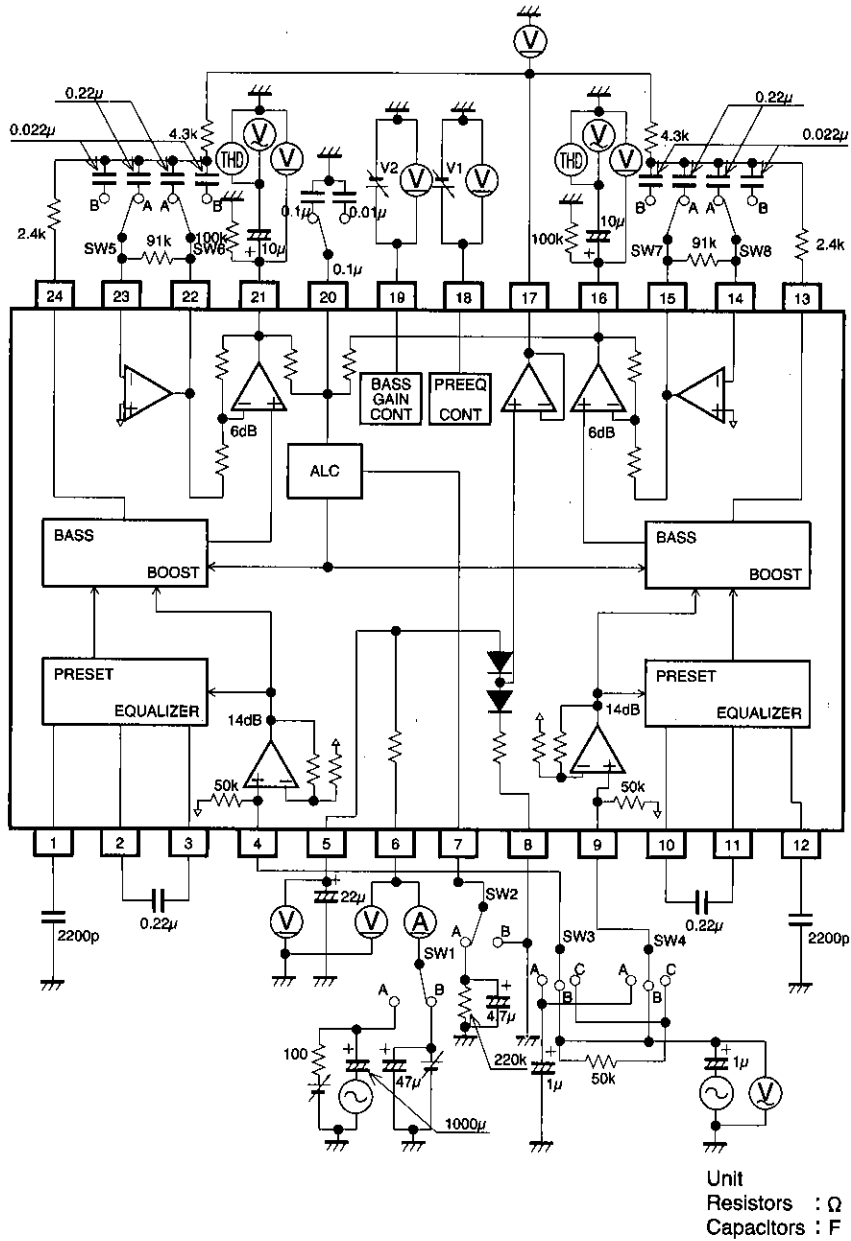


Fig.1

Preset graphic equalizers

Audio accessory components

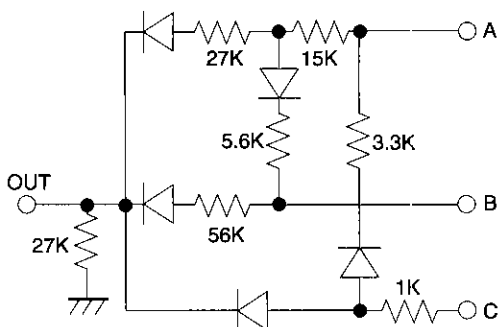
●Circuit operation

1. Operating supply voltage range

Within the operating supply voltage range, circuit functioning is guaranteed as long as the operating temperature range is not exceeded. However, verify carefully that the voltage, temperature, and component values are appropriate.

2. Control pins and control voltage settings

- 2-1. The DC control range is 0 V to V_{CC} for the preset equalizer and the dynamic bass boost control pins (pins 18 and 19). Make sure that the voltage applied to these control pins does not exceed V_{CC} .
- 2-2. Mode switch threshold values are determined by dividing resistors between V_{CC} and GND of both the preset equalizer and bass boost. If the control voltages are divided from the supply voltage of the IC, they will have greater tolerance with respect to V_{CC} fluctuations.
- 2-3. During mode switching, an abrupt change in the level of the DC output may occur, causing a sound. In this case, add the capacitor and resistor indicated in the application, or only the capacitor as needed.
- 2-4. Here is an example of determining the control pin voltage setting with the input of three values.



Connect OUT to the control pin.

Regarding the values of the various constants, it is important to consider current dissipation and other such problems. If such a problem should occur, change the constants and redesign the diode logic.

OUT電圧	C	B	A
0 V	L	L	L
1.3 V	L	L	H
3 V	L	H	L
5 V	L	H	H
7 V	H	L	L
9 V	H	L	H

L : 0V
H : V_{CC}

3. Input coupling capacitors

Note that the polarity of the input coupling capacitors will change depending on the DC voltage to which they are connected. Set capacitors based on the frequency band to be used, taking into consideration the fact that the input impedance is 50kΩ.

4. Load resistances

If the values of the load resistors are too small, the output gain and total harmonic distortion may fluctuate slightly. Take this into consideration when connecting the subsequent stage.

5. The dynamic bass boost filter is a multi feedback active filter which forms the BPF.

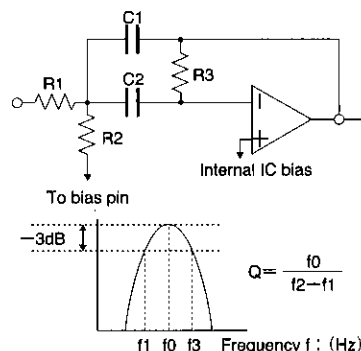
f_0 can be changed with the C value.

$$f_0 = 1 / [2\pi \times \{(R_1 // R_2) \times R_3 \times C_1 \times C_2\}^{1/2}]$$

$$Q = 1/2 \times \{(R_3 / (R_1 // R_2))\}^{1/2}$$

$$H_0 = R_3 / \{R_1 \times (1 + C_1 / C_2)\}^{1/2}$$

When $R_1 = 2.4k\Omega$, $R_2 = 4.3k\Omega$, $R_3 = 91k\Omega$, and $C_1 = C_2 = 0.22\mu F$,
 $f_0 \cong 61\text{Hz}$ $Q \cong 3.8$ $H_0 \cong 19$



If R_1 and R_2 are too small, the bass boost characteristics such as boost gain and crosstalk may change. Keep this in mind when setting filter values. Furthermore, design the application so that the bass boost level increments by 5dB from 5 to 20dB when $H_0 = 19$.

6 Filter for preset equalizer

6-1. Low band

The low cutoff frequency f_c of each mode is given by the following equation :

$$f_c = 1/2 \pi CR = 1/(2 \pi \times C \times 15.6k\Omega)$$

When $C = 0.22 \mu F$,

$$f_c \approx 46 \text{ (Hz)}$$

The f_c value can be changed to make slight changes in the boost and cutoff gain of each mode.

6-2. High band

The high cutoff frequencies f_c of each mode are given by the following equation :

$$f_c = 1/2 \pi CR$$

When $C = 2200pF$,

ROCK : $R=8.0k\Omega$ $f_c \approx 9.0 \text{ (kHz)}$

JAZZ : $R=10.7k\Omega$ $f_c \approx 6.8 \text{ (kHz)}$

CLASSIC : $R=14.9k\Omega$ $f_c \approx 4.8 \text{ (kHz)}$

BGM. POP : $R=17.4k\Omega$ $f_c \approx 4.2 \text{ (kHz)}$

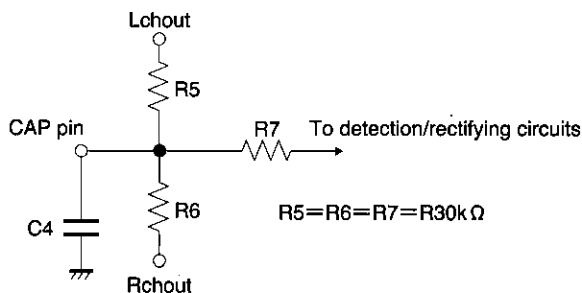
The f_c values can be changed to make slight changes in the boost and cutoff gain of each mode.

Note:

If a high or low f_c value is changed, the gains of all modes will change. The gain cannot be changed for only one mode.

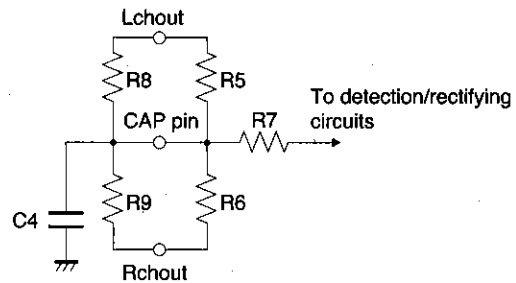
7. ALC

The band of ALC detection can be changed with the value of C_4 . It must be adjusted appropriately for the dynamic bass boost f_0 . In the example application circuit $C_4 = 0.1 \mu F$, thus $f_c = 1/2 \pi C_4 (R_5 // R_6 // R_7) \approx 160 \text{ (Hz)}$



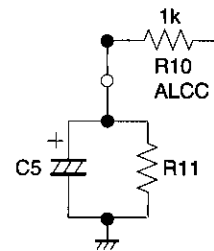
The detection wave is dually rectified. In the example application circuit, it is 1.3Vrms, but if the resistors R_8 and R_9 are connected as shown below, it will lower the ALC level. Adjust the ALC level as needed. The detection band at this time is :

$$f_c = 1/2 \pi C_4 (R_5 // R_6 // R_7 // R_8 // R_9)$$



8. Attack time and release time

Adjust the attack and release times with the resistors and capacitors connected to the ALCC pin. The attack time is determined by R_{10} ($1k\Omega$) and C_5 , and the release time is determined by R_{11} and C_5 . If the value set for C_5 is below $4.7 \mu F$, the ALC level may become unstable.



Preset graphic equalizers

Audio accessory components

●Electrical characteristic curves (reference values)

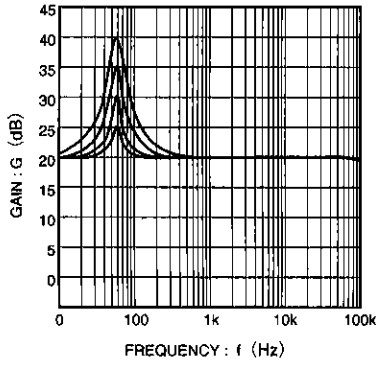


Fig. 2 Dynamic bass boost frequency characteristics

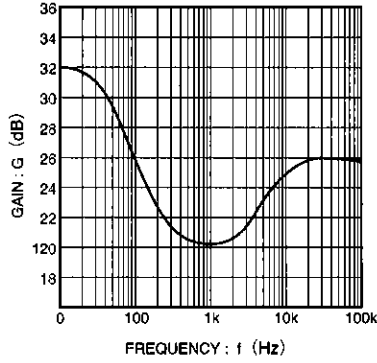


Fig. 3 PRE-G-EQ frequency characteristics (rock)

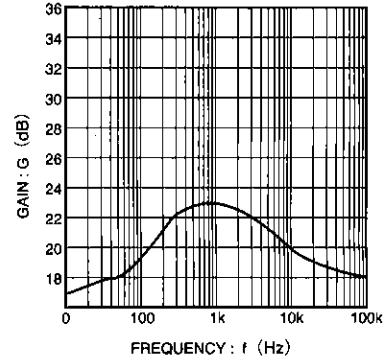


Fig. 4 PRE-G-EQ frequency characteristics (pop)

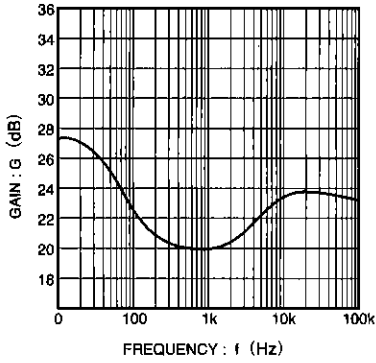


Fig. 5 PRE-G-EQ frequency characteristics (jazz)

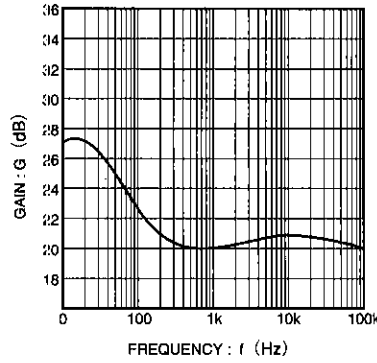


Fig. 6 PRE-G-EQ frequency characteristics (classic)

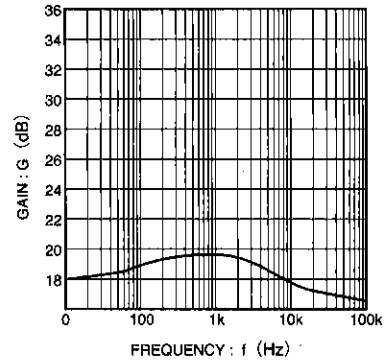


Fig. 7 PRE-G-EQ frequency characteristics (BGM)

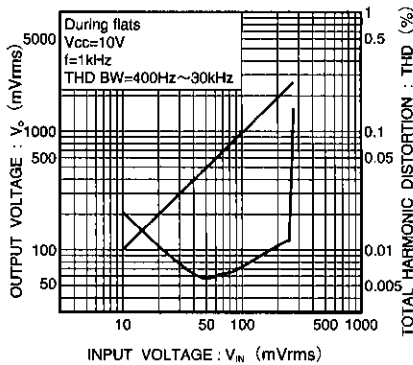


Fig.8 Input/output characteristics

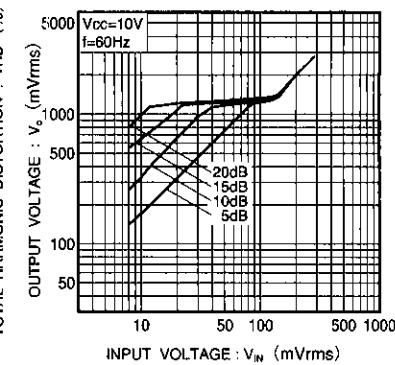
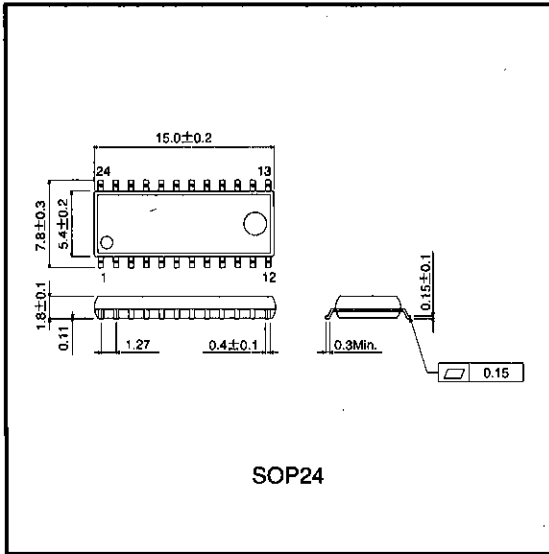


Fig.9 Bass boost ALC input/output characteristics

●External dimensions (Unit: mm)



Notes

- The contents described in this catalogue are correct as of March 1997.
- No unauthorized transmission or reproduction of this book, either in whole or in part, is permitted.
- The contents of this book are subject to change without notice. Always verify before use that the contents are the latest specifications. If, by any chance, a defect should arise in the equipment as a result of use without verification of the specifications, ROHM CO., LTD., can bear no responsibility whatsoever.
- Application circuit diagrams and circuit constants contained in this data book are shown as examples of standard use and operation. When designing for mass production, please pay careful attention to peripheral conditions.
- Any and all data, including, but not limited to application circuit diagrams, information, and various data, described in this catalogue are intended only as illustrations of such devices and not as the specifications for such devices. ROHM CO., LTD., disclaims any warranty that any use of such device shall be free from infringement of any third party's intellectual property rights or other proprietary rights, and further, assumes absolutely no liability in the event of any such infringement, or arising from or connected with or related to the use of such devices.
- Upon the sale of any such devices; other than for the buyer's right to use such devices itself, resell or otherwise dispose of the same; no express or implied right or license to practice or commercially exploit any intellectual property rights or other proprietary rights owned or controlled by ROHM CO., LTD., is granted to any such buyer.
- The products in this manual are manufactured with silicon as the main material.
- The products in this manual are not of radiation resistant design.

The products listed in this catalogue are designed to be used with ordinary electronic equipment or devices (such as audio-visual equipment, office-automation equipment, communications devices, electrical appliances, and electronic toys). Should you intend to use these products with equipment or devices which require an extremely high level of reliability and the malfunction of which would directly endanger human life (such as medical instruments, transportation equipment, aerospace machinery, nuclear-reactor controllers, fuel controllers, or other safety devices) please be sure to consult with our sales representatives in advance.

- Notes when exporting
 - It is essential to obtain export permission when exporting any of the above products when it falls under the category of strategic material (or labor) as determined by foreign exchange or foreign trade control laws.
 - Please be sure to consult with our sales representatives to ascertain whether any product is classified as a strategic material.