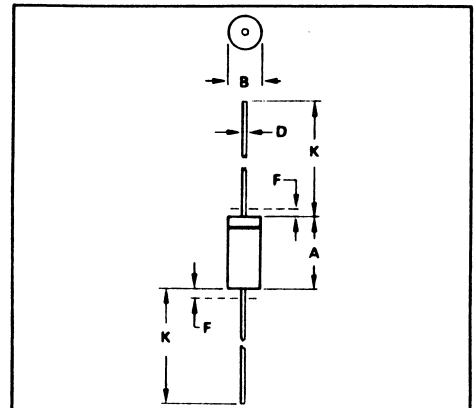
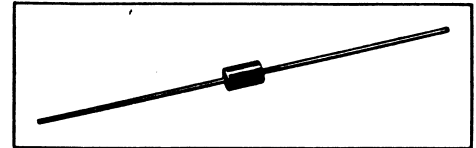


1N746 thru 1N759
1N957A thru 1N986A
1N4370 thru 1N4372

GLASS ZENER DIODES
500 MILLIWATTS
2.4-110 VOLTS



NOTES:

1. PACKAGE CONTOUR OPTIONAL WITHIN A AND B. HEAT SLUGS, IF ANY, SHALL BE INCLUDED WITHIN THIS CYLINDER, BUT NOT SUBJECT TO THE MINIMUM LIMIT OF B.
2. LEAD DIAMETER NOT CONTROLLED IN ZONE F TO ALLOW FOR FLASH, LEAD FINISH BUILDUP AND MINOR IRREGULARITIES OTHER THAN HEAT SLUGS.
3. POLARITY DENOTED BY CATHODE BAND.
4. DIMENSIONING AND TOLERANCING PER ANSI Y14.5, 1973.

DIM	MILLIMETERS		INCHES	
	MIN	MAX	MIN	MAX
A	3.05	5.08	0.120	0.200
B	1.52	2.29	0.060	0.090
D	0.46	0.56	0.018	0.022
F	-	1.27	-	0.050
K	25.40	38.10	1.000	1.500

All JEDEC dimensions and notes apply.

MAXIMUM RATINGS

Rating	Symbol	Value	Unit
DC Power Dissipation @ $T_L < 50^\circ\text{C}$, Lead Length = 3/8"	P_D	400	mW
*JEDEC Registration		3.2	mW/ $^\circ\text{C}$
*Derate above $T_L = 50^\circ\text{C}$		500	mW
Motorola Device Ratings		3.33	mW/ $^\circ\text{C}$
Derate above $T_L = 50^\circ\text{C}$			
Operating and Storage Junction Temperature Range	T_J, T_{stg}	-65 to +175	$^\circ\text{C}$
*JEDEC Registration Motorola Device Ratings		-65 to +200	

*Indicates JEDEC Registered Data.

MECHANICAL CHARACTERISTICS

MAXIMUM LEAD TEMPERATURE FOR SOLDERING PURPOSES: 230 $^\circ\text{C}$, 1/16" from case for 10 seconds

FINISH: All external surfaces are corrosion resistant with readily solderable leads.

POLARITY: Cathode indicated by color band. When operated in zener mode, cathode will be positive with respect to anode.

MOUNTING POSITION: Any

