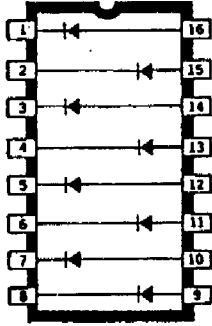


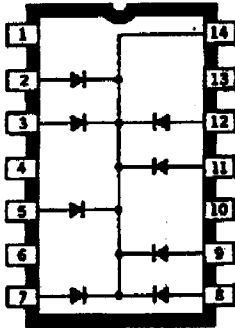
SERIES TND DIODE ARRAYS



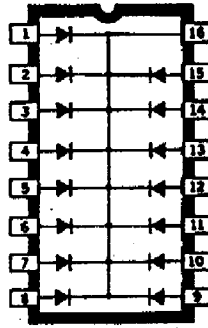
TND903
 TND908
 TND918

The TND series consists of diode arrays packaged in 14-pin and 16-pin dual in-line plastic packages for easy automatic insertion and better printed circuit board density.

In addition to the diode characteristics for standard products shown here, arrays consisting of diodes with 1N3070, 1N3595, 1N3600, 1N4153, or 1N4447 characteristics can be furnished on request.



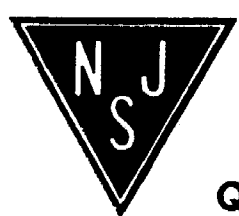
TND933
 TND940



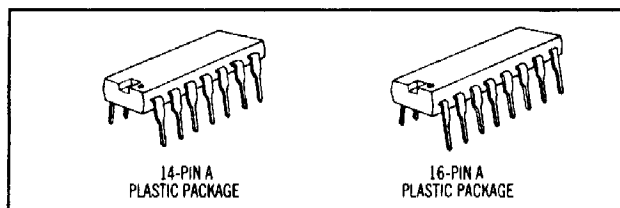
TND905

ELECTRICAL CHARACTERISTICS at $T_A = +25^\circ\text{C}$

Device Type	V_{BR} Min. (V)	V_F		I_R		Device Type	V_{BR} Min. (V)	V_F		I_R	
		Max. (V)	@ I_F (mA)	Max. (nA)	@ V_R (V)			Max. (V)	@ I_F (mA)	Max. (nA)	@ V_V (V)
TND903	75	1.0	100	—	—	TND933	60	1.0	100	100	40
TND905	100	1.0	10	—	—	TND940	40	1.0	100	100	25
TND908	100	1.0	10	—	—						
TND918	75	1.0	50	—	—						



Quality Semi-Conductors



14-PIN A
 PLASTIC PACKAGE

16-PIN A
 PLASTIC PACKAGE