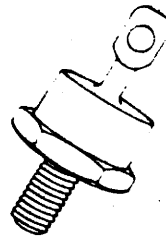


UES804-UES806  
**RECTIFIERS**  
 High Efficiency, 50A



**ABSOLUTE MAXIMUM RATINGS**

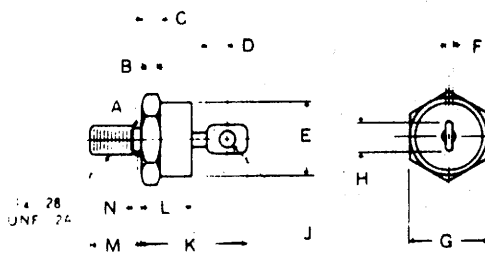
|                                                                 |                 |
|-----------------------------------------------------------------|-----------------|
| Peak Inverse Voltage, UES804                                    | 200V            |
| Peak Inverse Voltage, UES805                                    | 300V            |
| Peak Inverse Voltage, UES806                                    | 400V            |
| Maximum Average D.C. Output Current @ $T_c = 100^\circ\text{C}$ | 50A             |
| Surge Current, 8.3mSec                                          | 600A            |
| Thermal Resistance, Junction to Case                            | .8°C/W          |
| Operating and Storage Temperature Range                         | -55°C to +150°C |

**ELECTRICAL SPECIFICATIONS**

| Type   | PIV  | Maximum Forward Voltage  |                           | Maximum Reverse Current  |                           | Maximum Reverse Recovery Time* |
|--------|------|--------------------------|---------------------------|--------------------------|---------------------------|--------------------------------|
|        |      | $T_c = 25^\circ\text{C}$ | $T_c = 125^\circ\text{C}$ | $T_c = 25^\circ\text{C}$ | $T_c = 125^\circ\text{C}$ |                                |
| UES804 | 200V | 1.25V                    | 1.15V                     | 70 $\mu$ A               | 30mA                      | 50nS                           |
| UES805 | 300V | @ $I_F = 50\text{A}$     | @ $I_F = 50\text{A}$      |                          |                           |                                |
| UES806 | 400V | $t_p = 300\mu\text{S}$   | $t_p = 300\mu\text{S}$    |                          |                           |                                |

\* Measured in circuit  $I_F = 0.5\text{A}$ ,  $I_R = 1\text{A}$ ,  $I_{REC} = 0.25\text{A}$

**MECHANICAL SPECIFICATIONS**



|   | ins.         | mm            |
|---|--------------|---------------|
| A | 225 ± .005   | 5.72 ± 0.13   |
| B | 060 MIN      | 1.52 MIN      |
| C | 156 ± .020   | 3.96 ± 0.51   |
| D | 156 MIN FLAT | 3.96 MIN FLAT |
| E | 667 DIA MAX  | 16.94 DIA MAX |
| F | 090 MAX      | 2.29 MAX      |
| G | 677 ± .010   | 17.20 ± 0.25  |
| H | 375 MAX      | 9.53 MAX      |
| J | 140 MIN DIA  | 3.56 MIN DIA  |
| K | 1.000 MAX    | 25.40 MAX     |
| L | 450 MAX      | 11.43 MAX     |
| M | 438 ± .015   | 11.13 ± 0.38  |
| N | 078 MAX      | 1.98 MAX      |

**Notes:**

- Standard polarity is cathode-to-stud.  
For reverse polarity (anode-to-stud) add suffix "R", ie. UES804R.
- All metal surfaces tin plated.
- Maximum unlubricated stud torque: 30 inch pounds.
- Angular orientation of terminal is undefined.

NJ Semi-Conductors reserves the right to change test conditions, parameter limits and package dimensions without notice. Information furnished by NJ Semi-Conductors is believed to be both accurate and reliable at the time of going to press. However, NJ Semi-Conductors assumes no responsibility for any errors or omissions discovered in its use. NJ Semi-Conductors encourages customers to verify that datasheets are current before placing orders.

