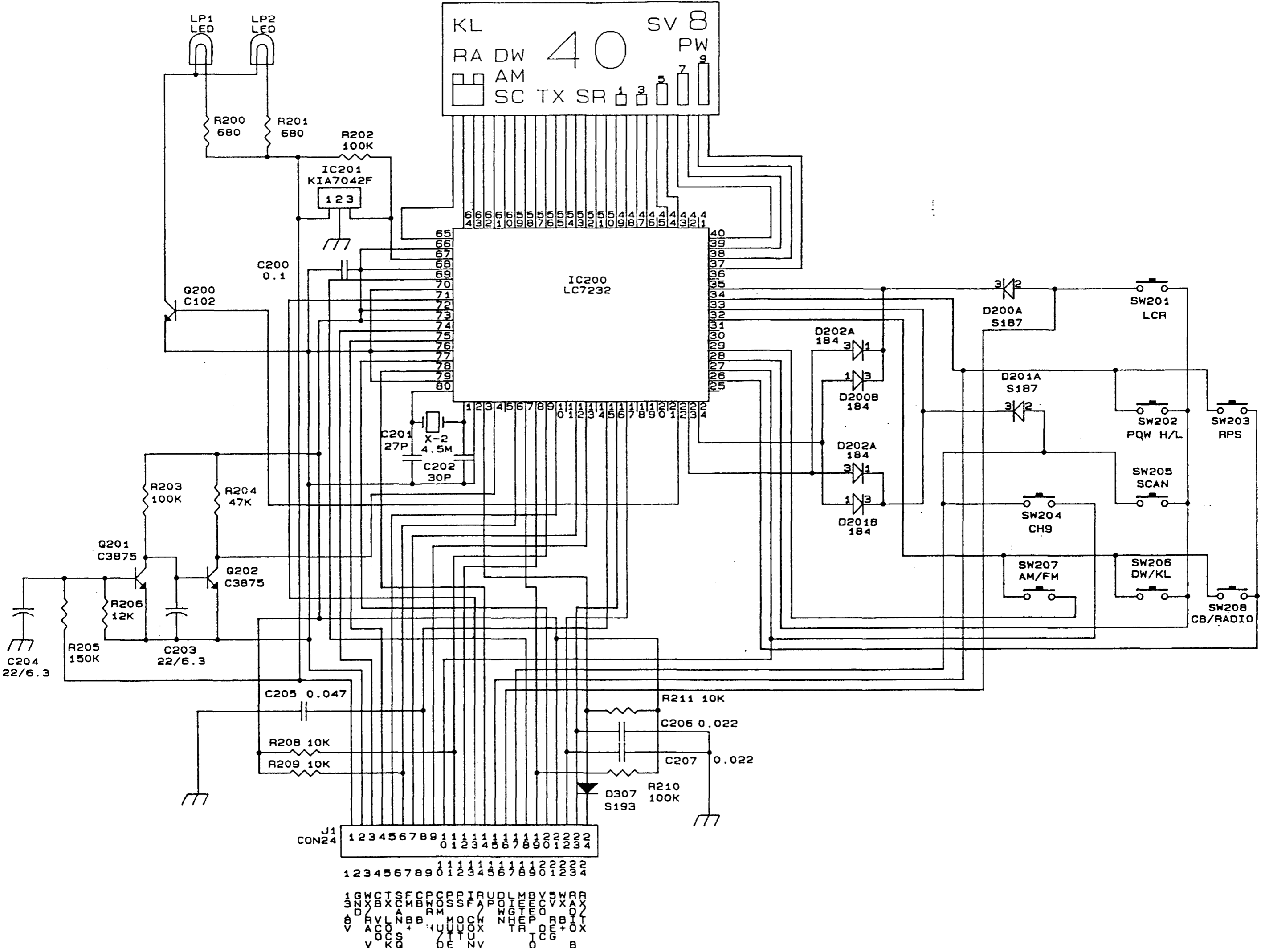


- 1. SCAN IN
- 2. PS MUTE
- 3. BEEP TONE
- 4. FM B+
- 5. CB VCO IN
- 6. RADIO B+
- 7. RA VCO IN
- 8. CB B+
- 9. LIGHT
- 10. UP
- 11. DOWN
- 12. COM

- 1. CB VCO DC
- 2. PS VCO DC
- 3. WX B+
- 4. 5V
- 5. IF COUNT
- 6. PS OUT
- 7. TX POWER
- 8. TX GND
- 9. METER
- 10. 13.8V
- 11. TX LOCK
- 12. GND



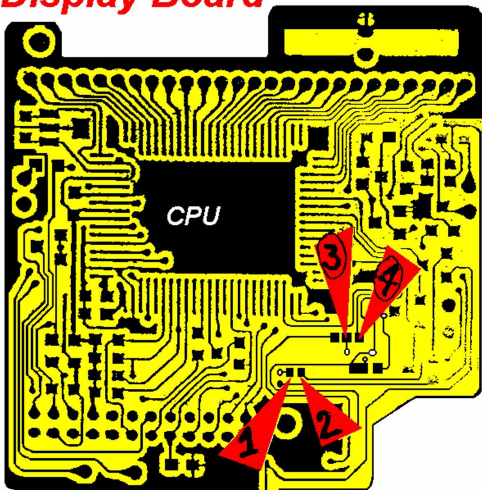
KL 40 SV 8  
 RA DW 40 PW  
 AM  
 SC TX SR 1 3 5 7 8

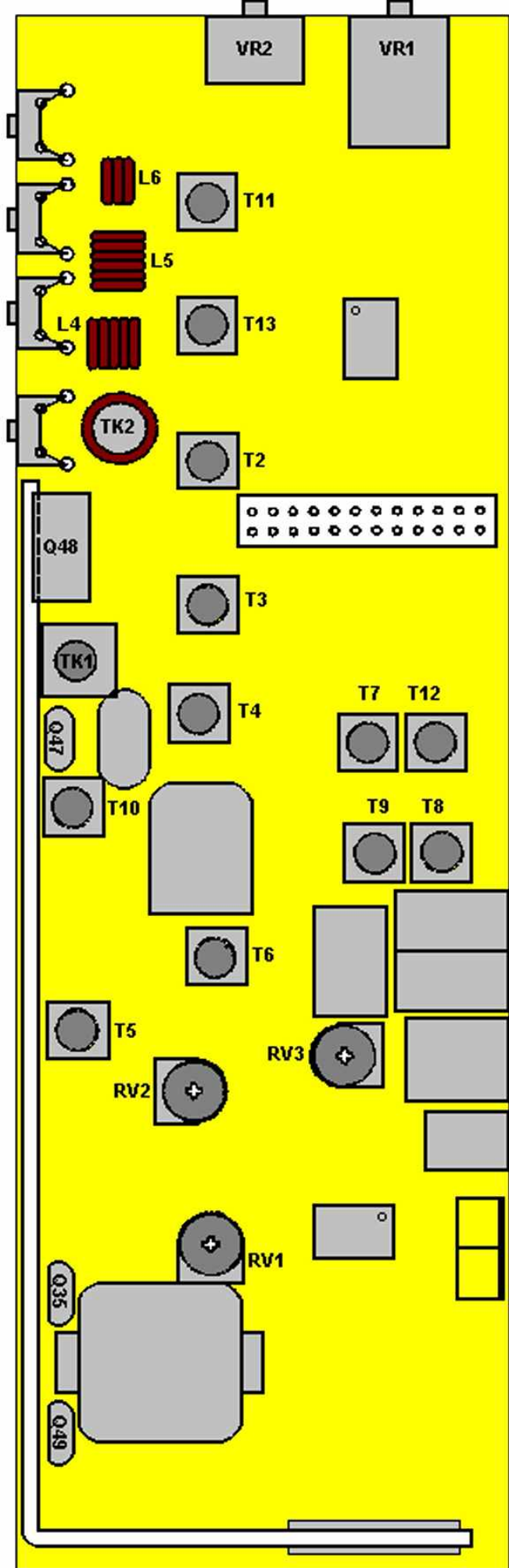
J1  
 CON24

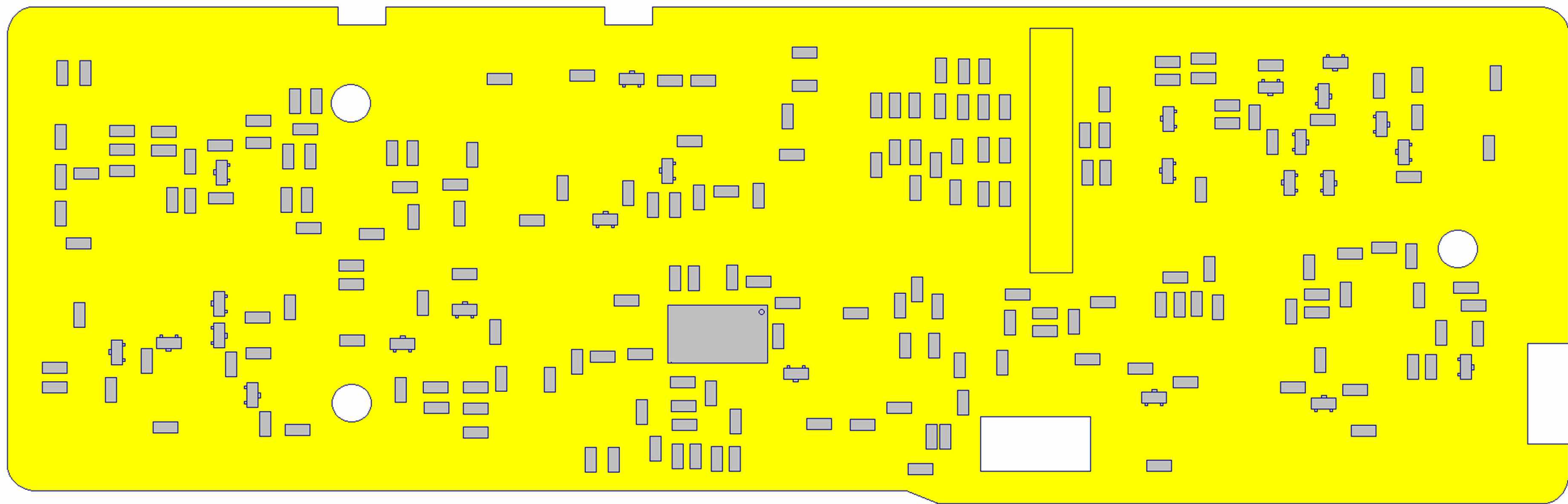
1	2	3	4	5	6	7	8	9	10	11	12	13	14	15	16	17	18	19	20	21	22	23	24	
0	1	2	3	4	5	6	7	8	9	0	1	2	3	4	5	6	7	8	9	0	1	2	3	4

1G W C T S F C P C P P I R U P O L M B V 3 W R R  
 3 N X B X C M B W R M O S S F A P U D L M B V 3 W R R  
 8 V L A N B B M C O C X Z H G T E F E C V X A X  
 V A C O + U U U C O X T H E P E O R B I T  
 V K C G D E N V O C G + O X  
 B

# Display Board













100W  
100W  
100W

PRESIDENT

RPS CH19 GLENN



CB TRANSCEIVER/FM RADIO

CB/RA MODE SCAN PW/ME CH9  
DW/KL