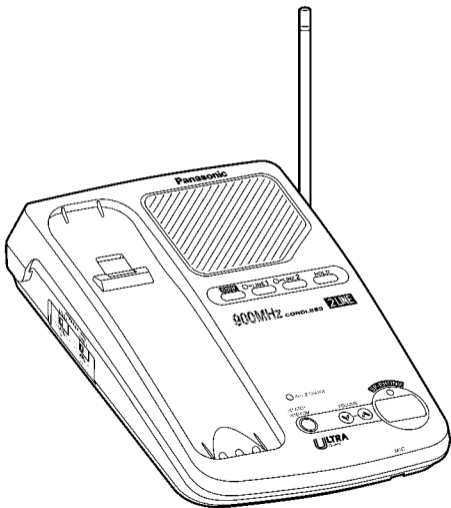
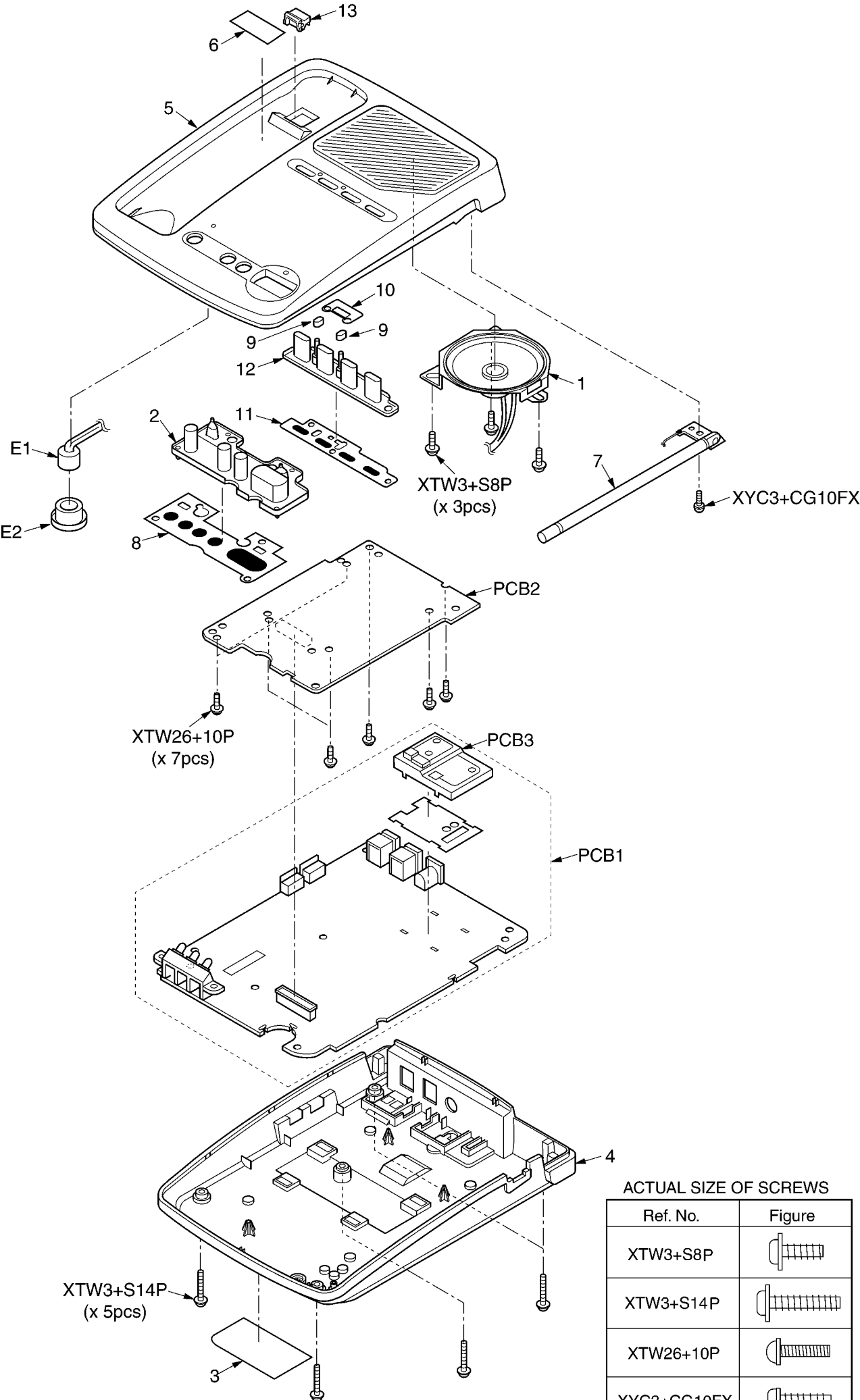


(Handset)

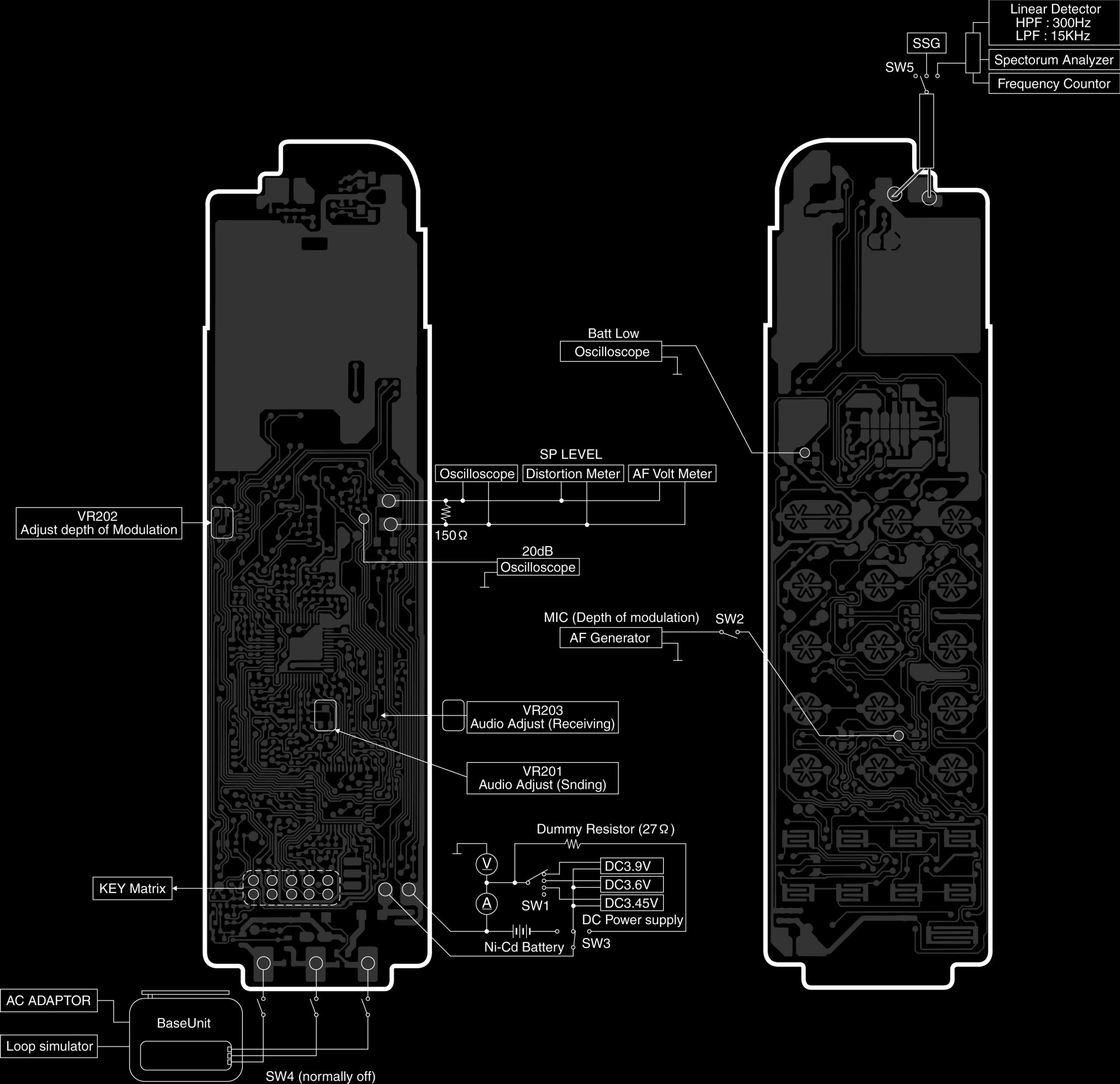


(Base Unit)

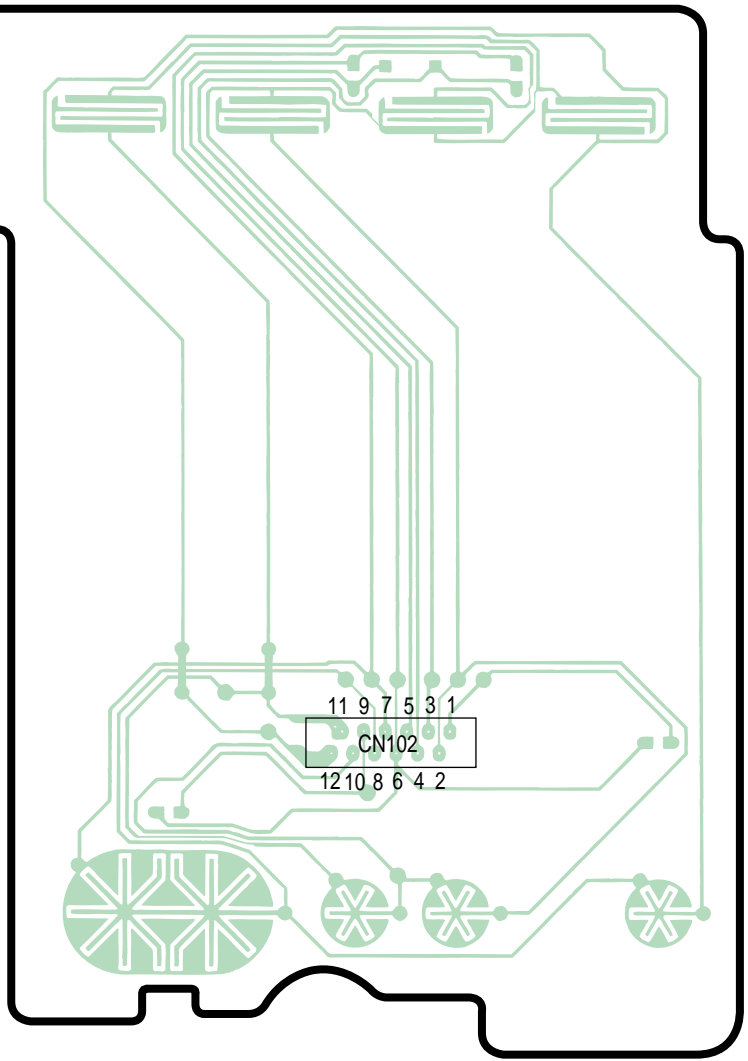


**ACTUAL SIZE OF SCREWS**

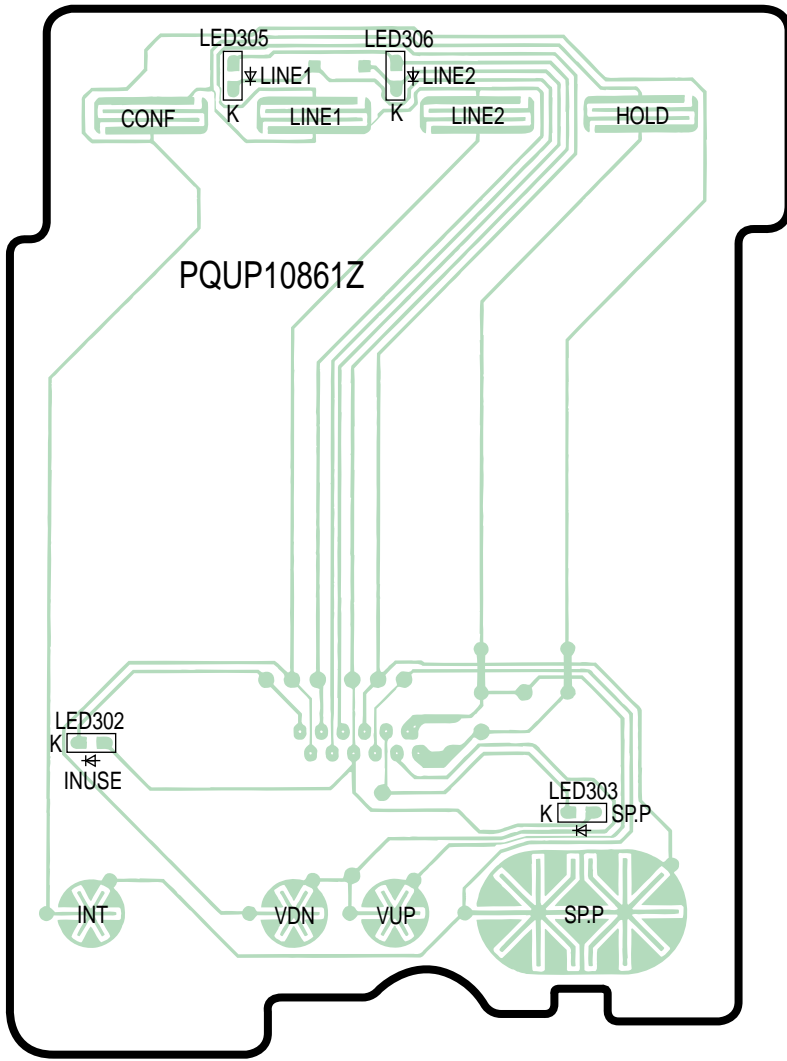
Ref. No.	Figure
XTW3+S8P	
XTW3+S14P	
XTW26+10P	
XWC3+CG10FX	



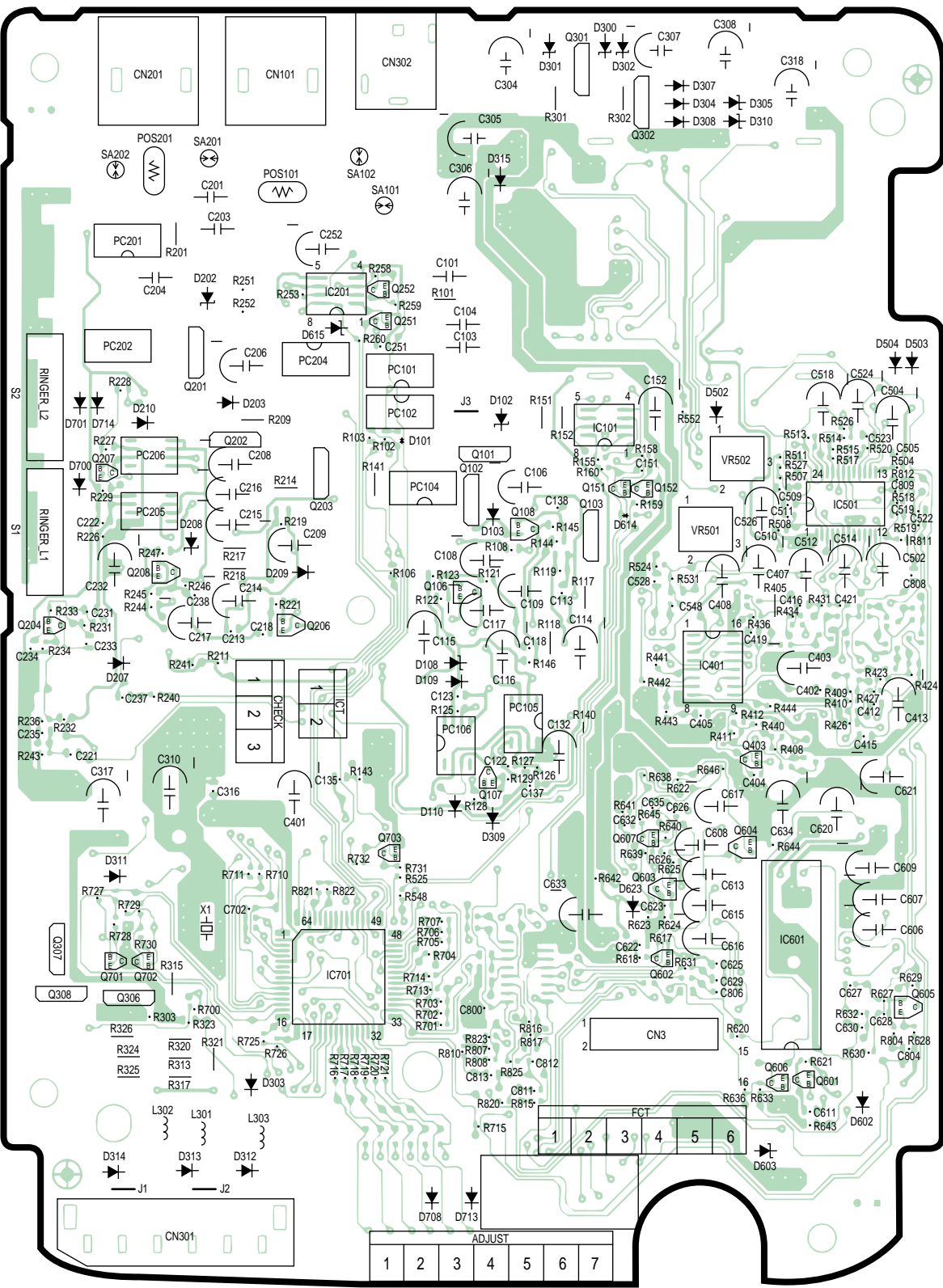
(Component View)



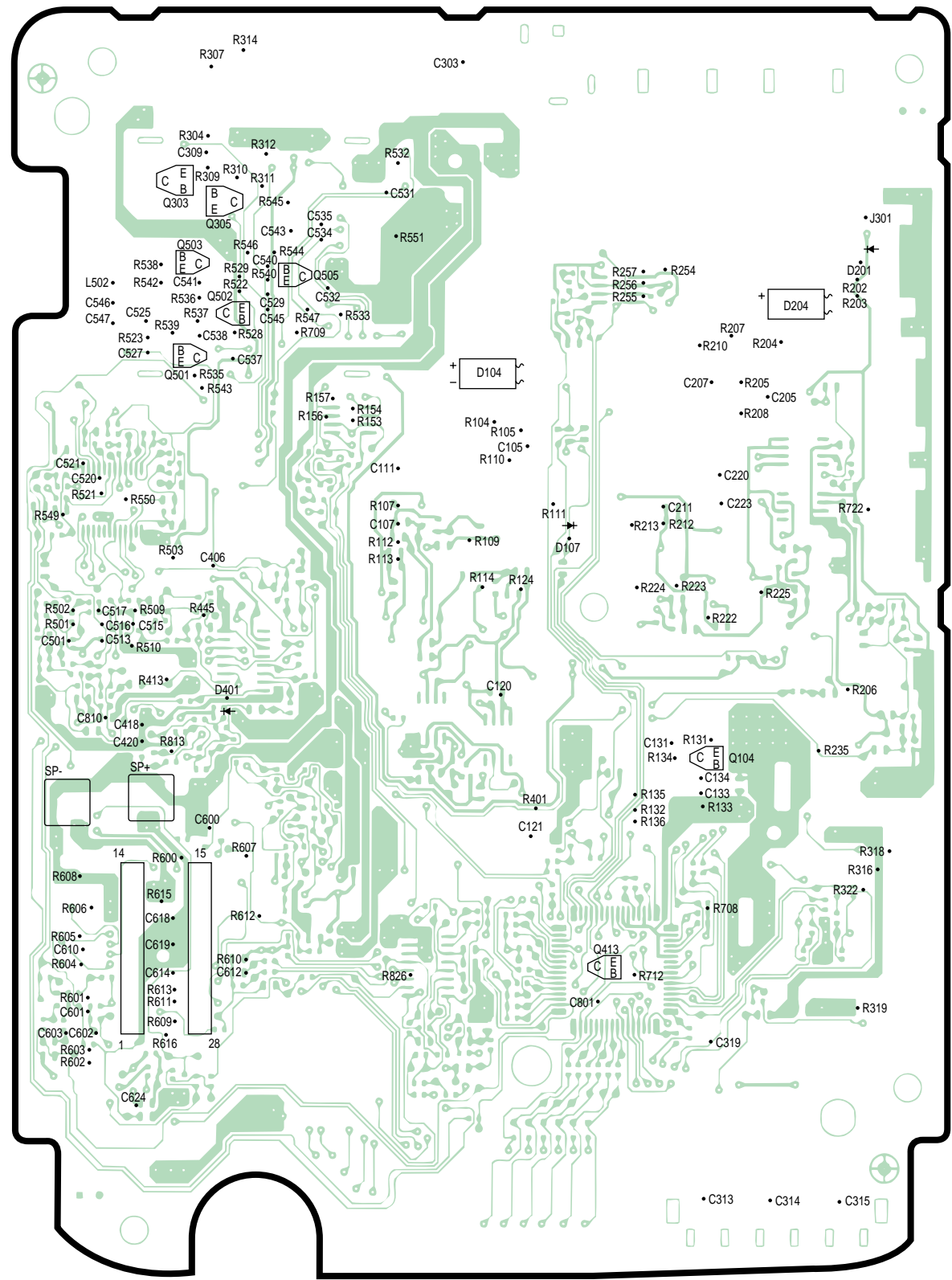
(Flow Solder Side View)

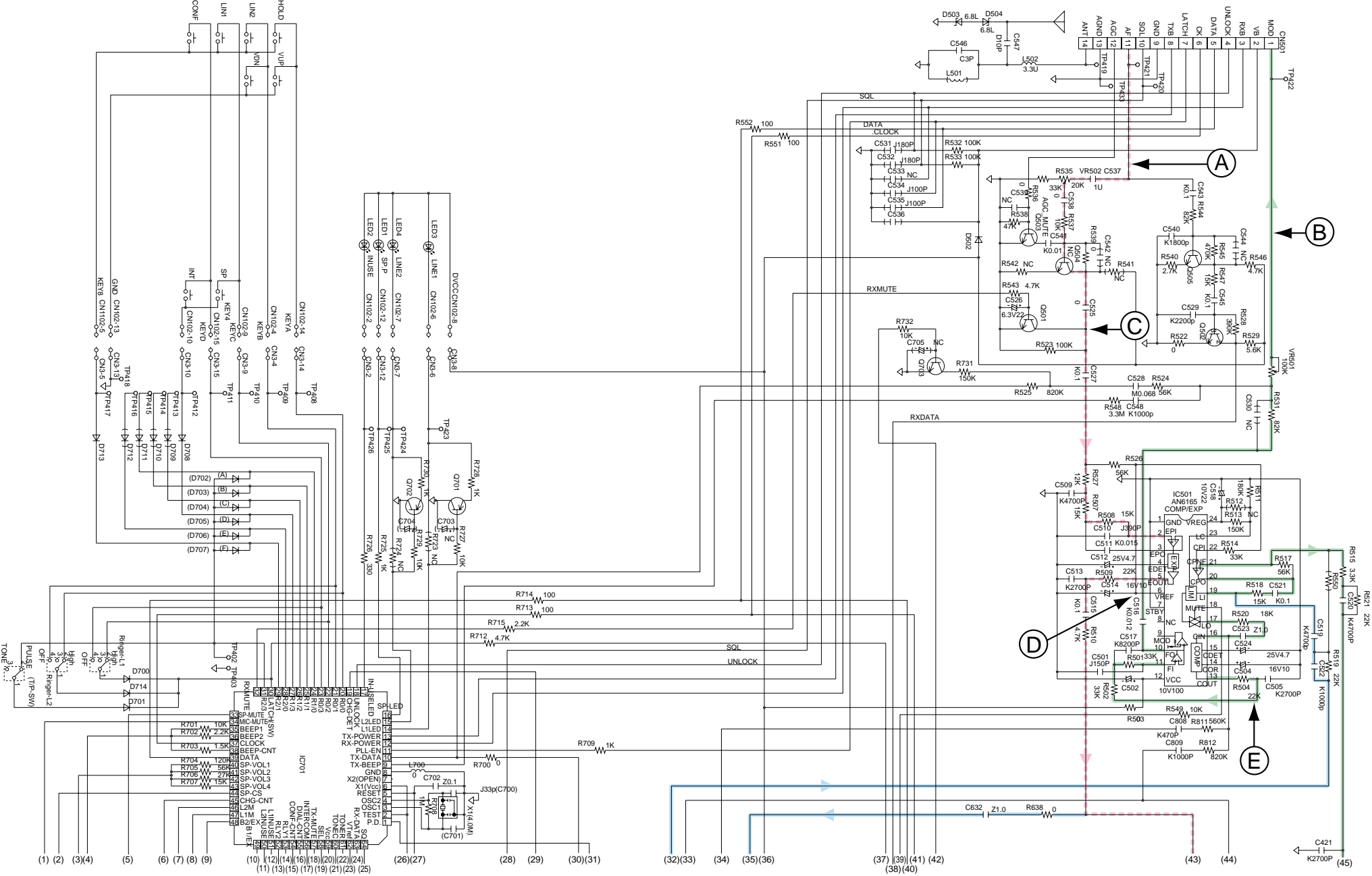


(Component View)



(Flow Solder Side View)





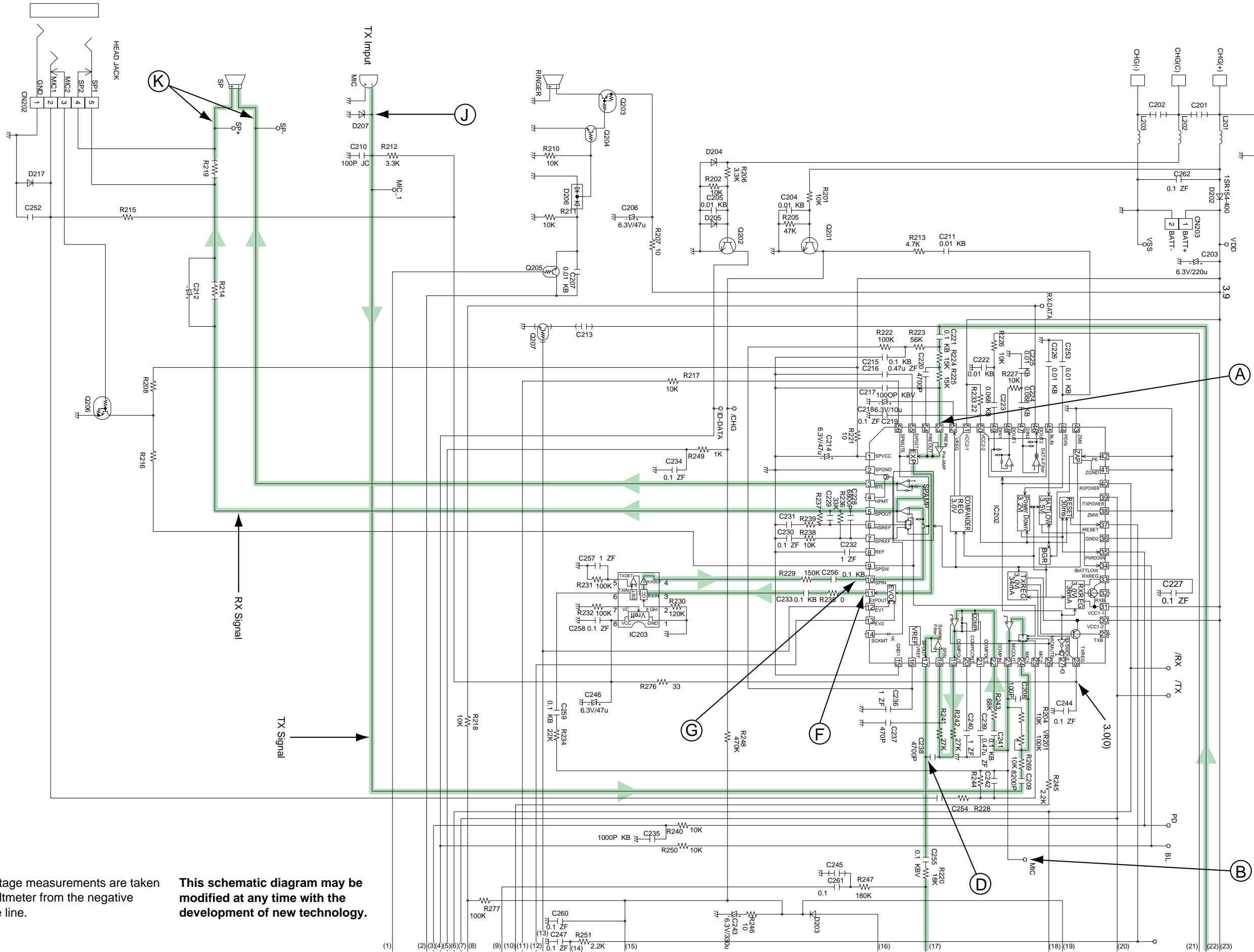
**Notes:**

- |                                       |                                  |                                |  |
|---------------------------------------|----------------------------------|--------------------------------|--|
| 1. S302: Ringer Selector Switch       | 6. S515: Speakerphone Switch     | 11. S520: Volume (Up) Switch   | 15. S523: LINE2 Switch   |
| 2. S501~509, 511, 512: Dialing Switch | 7. S516: Locator/Intercom Switch | 12. S521: Volume (Down) Switch | 16. S522: HOLD Switch  |
| 3. S510: Tone Switch                  | 8. S517: Auto Switch             | 13. S525: CONF Switch          | 17. DC voltage measurements are taken with voltmeter from the negative voltage line. |
| 4. S513: Flash Switch                 | 9. S518: Program Switch          | 14. S524: LINE1 Switch         |  |
| 5. S514: Redial Switch                | 10. S519: Pause Switch           |                                |  |

**Important Safety Notice:**  
 Components identified by ⚠ mark have special characteristics important for safety. When replacing any of these components, use only manufacturer's specified parts.

This schematic diagram may be modified at any time with the development of new technology.





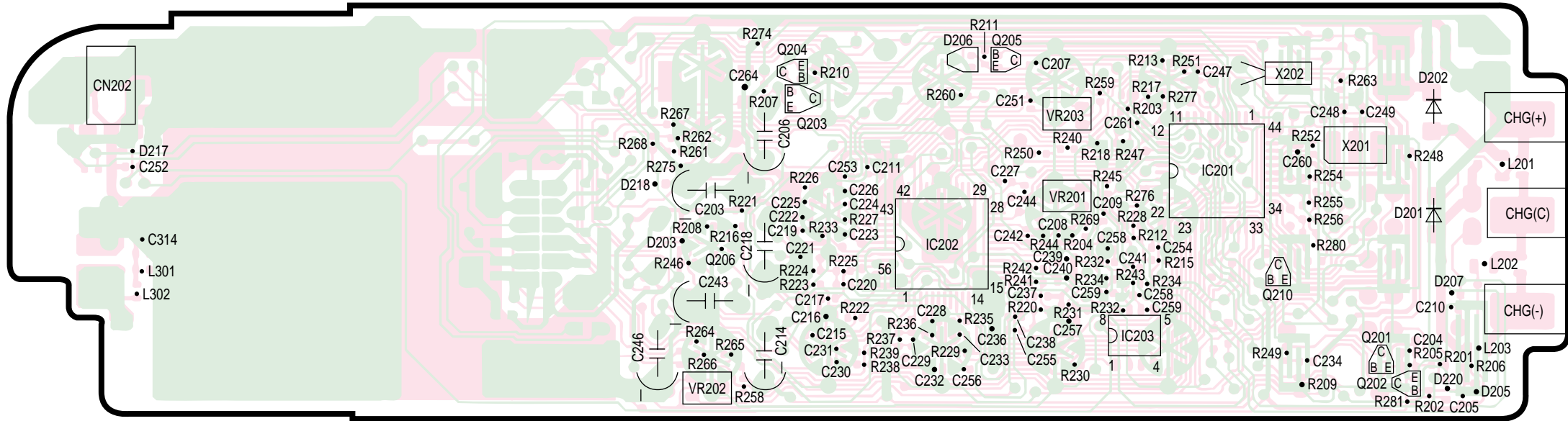
**Notes:**  
 1. DC voltage measurements are taken with voltmeter from the negative voltage line.

**This schematic diagram may be modified at any time with the development of new technology.**

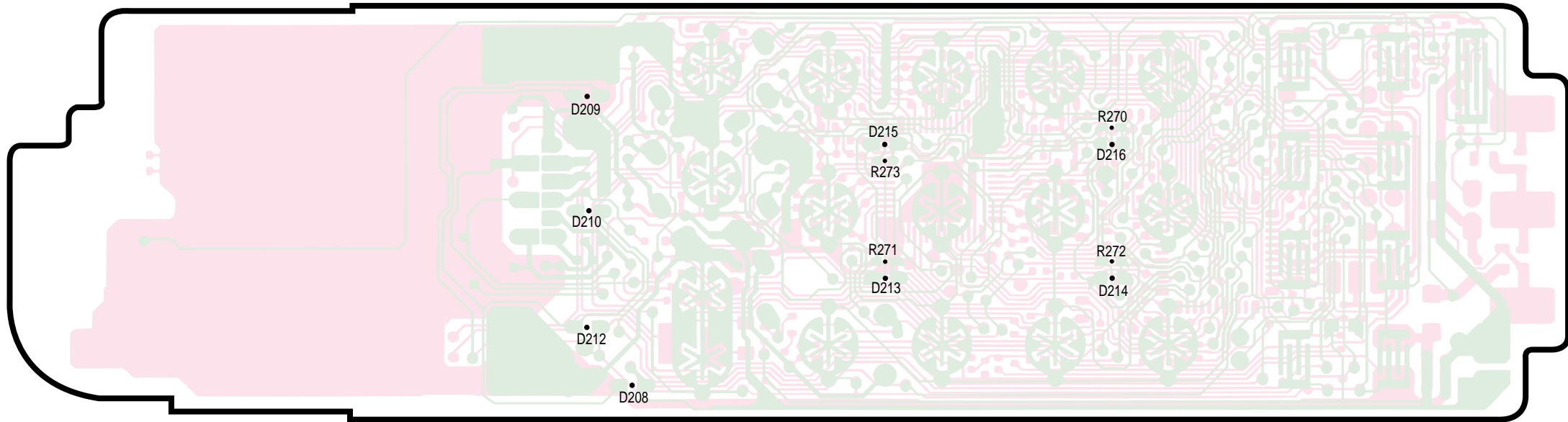
(1) (2) (3) (4) (5) (6) (7) (8) (9) (10) (11) (12) (13) (14) (15) (16) (17) (18) (19) (20) (21) (22) (23)



# (Component View)



# (Flow Solder Side View)



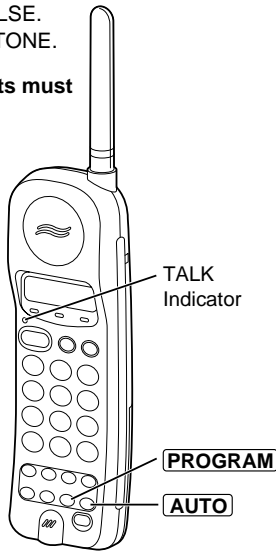


# Selecting the Dialing Mode

You can program the dialing mode by using the handset near the base unit. If you have touch tone service, set to TONE. If rotary or pulse service is used, set to PULSE. Your phone comes from the factory set to TONE.

The TALK and SP-PHONE indicator lights must be off before programming.

- 1 Press **PROGRAM**.
  - The TALK indicator flashes.
- 2 press **AUTO**.
- 3 To select PULSE, press **#** twice.  
OR  
To select TONE, press **X** twice.
- 4 When finished, press **PROGRAM**.
  - A confirmation tone sounds.



- To cancel during programming, press **PROGRAM**, then start from step 1.
- If 3 beeps sound during programming, a wrong key was pressed. Restart from step 1.
- If either line has rotary or pulse service, set to PULSE. When making a call using line which has touch tone service, press **X** first and then dial the number.

## What the confirmation tone means

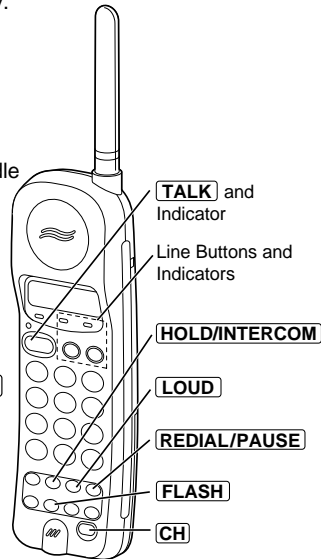
- 1 beep: The mode is different from the previously selected one.
  - 2 beeps: The mode is the same as the previously selected one.
- If a power failure occurs, the mode will return to the factory preset (TONE). Reprogram if necessary.

# Making Calls

## With the Handset

The unit will automatically select an idle line when you press to make a call.

- 1 Press **TALK**.
  - The TALK indicator and the selected line indicator light.
- 2 Dial a telephone number.
  - If you misdial, press **FLASH** firmly then dial again.
- 3 To hang up, press **TALK** or place the handset on the base unit.



- If an alarm tone sounds in step 1, move closer to base unit or place the handset on the base unit. Then try again.
- In step 1, you may select a line manually by pressing the line button instead of **TALK**.

## To redial the last number dialed on the handset

Press **TALK** (or a line button) ➔ **REDIAL/PAUSE**.

## To select the receiver volume

Press **LOUD** while talking.

- Each time you press the button, the volume level will change from MEDIUM (press) to HIGH to LOW.

## If noise interferes with the conversation

Press **CH** to select a clearer channel or move closer to the base unit.

## To put a call on hold

Press **HOLD/INTERCOM**.

- The TALK indicator light goes out and the line indicator flashes.
- After 6 minutes, warning tones will sound every 10-15 seconds. After a total of 10 minutes, the call will be disconnected.

## To release the hold

Press the line button.

- If another phone is connected on the same line, you can also release the hold by lifting its handset.

You may make or answer a second call on the other line while keeping the present call on the hold.

## What the line indicator means

Off	The line is free.
On	You are using the line on the handset or the base unit.
Flashing twice every 2 seconds	Someone else is using the line on the handset, base unit or parallel connected telephone.
Flashing	A call is on hold.
Flashing	A call is on hold.

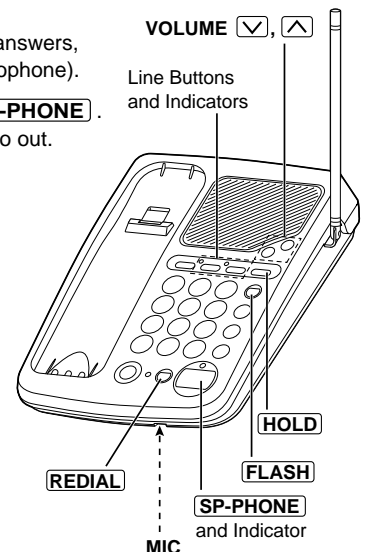
## Light handset keypad

The handset dialing buttons will light while dialing and flash when a call is received. The lights will go out about 10 seconds after dialing or answering a call.

## With the Base Unit

The unit will automatically select an idle line when you press **SP-PHONE** to make a call. (To change the line selection)

- 1 Press **SP-PHONE**.
  - The SP-PHONE indicator and the selected line indicator light.
- 2 Dial a telephone number.
  - If you misdial, press **FLASH** firmly then dial again.
- 3 When the other party answers, talk into the **MIC** (microphone).
- 4 To hang up, press **SP-PHONE**.
  - The indicator lights go out.



- In step 1, you may select a line manually by pressing the line button instead of **[SP-PHONE]**.

### To adjust the speaker volume (12 levels) while talking

To increase, press **VOLUME** **[▲]**. To decrease, press **VOLUME** **[▼]**.

### During the speakerphone operation:

- For best performance, talk alternately with the caller in a quiet room. If the caller complains that your voice is hard to hear, press **VOLUME** **[▼]** to decrease the speaker volume.
- If the handset is on the base unit, you may switch to the handset by lifting up.
- The line indicator shows the line condition.

### To redial the last number dialed on the base unit

Press (or a line button).

### To put a call on hold

Press.

- The SP-PHONE indicator light goes out and the line indicator flashes.
- After 6 minutes, warning tones will sound every 10–15 seconds. After a total of 10 minutes, the call will be disconnected.

### To release the hold

Press the line button.

- If another phone is connected on the same line, you can also release the hold by lifting its handset.

You may make or answer a second call on the other line while keeping the present call on hold.

## Speed Dialer (Handset)

### Storing Phone Numbers in Memory

You can store up to 10 phone numbers in the handset.

The dialing buttons (0 to 9) function as memory stations.

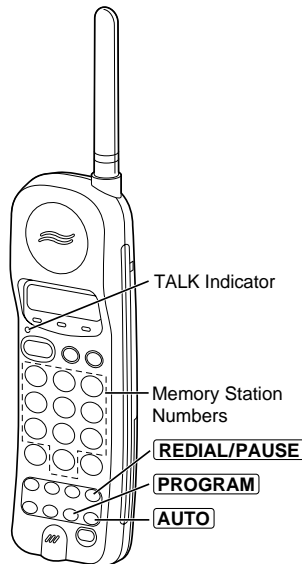
**The TALK indicator light must be off before programming.**

- 1 Press **[PROGRAM]**.
  - The TALK indicator flashes.

- 2 Enter a phone number up to 16 digits.
  - If you misdial, press **[PROGRAM]** to end storing, then restart from step 1.

- 3 Press **[AUTO]**.

- 4 Press a memory station number (0 to 9).
  - A confirmation tone sounds.\*
  - To store other numbers, repeat steps 1 through 4.



- If a pause is required for dialing, can be stored in a phone number counting as one digit.

### \*What the confirmation tone means

1 beep: The new number is stored.

2 beeps: The number is the same as the previously stored one.

## Speed Dialer (Base Unit)

### Storing Phone Numbers in Memory

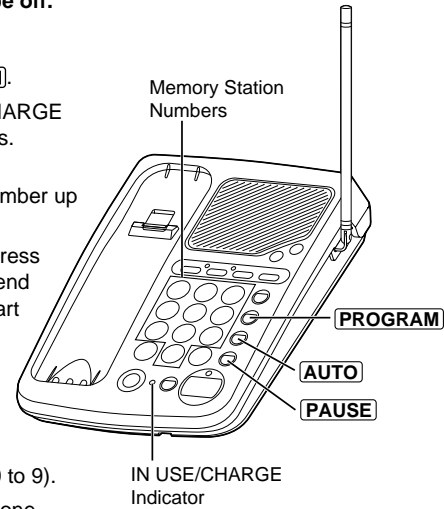
You can store up to 10 numbers in the base unit. The dialing buttons (0 to 9) function as memory stations. **The SP-PHONE indicator light must be off.**

- 1 Press **[PROGRAM]**.
  - The IN USE/CHARGE indicator flashes.

- 2 Enter a phone number up to 16 digits.
  - If you misdial, press **[PROGRAM]** to end storing, then start from step 1.

- 3 Press **[AUTO]**.

- 4 Press a memory station number (0 to 9).
  - A confirmation tone sounds.\*
  - To store other numbers, repeat steps 1 through 4.



### Dialing a Stored Number

- If a pause is required for dialing, can be stored in a phone number counting as one digit.

### \*What the confirmation tone means

1 beep: The new number is stored.

2 beeps: The number is the same as the previously stored one.

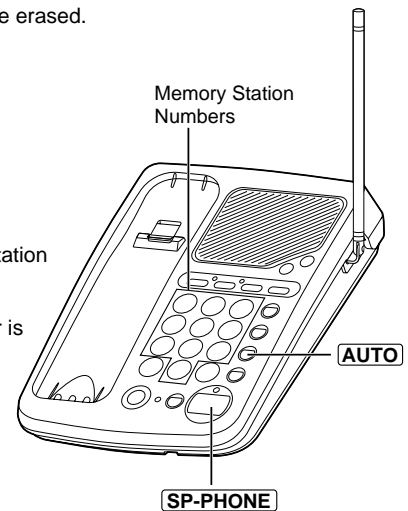
### To erase a stored number

Press **[PROGRAM]** **▶** **[AUTO]** **▶** the memory station number (0 to 9) for the phone number to be erased.

- 1 Press **[SP-PHONE]**.

- 2 Press **[AUTO]**.

- 3 Press the memory station number (0 to 9).
  - The stored number is dialed.



- Numbers stored in the base unit can only be dialed by the base unit.

# Using the Other Line During a Conversation

## While Someone Else is Using a Line (2-Line Simultaneous Base/Handset Operation)

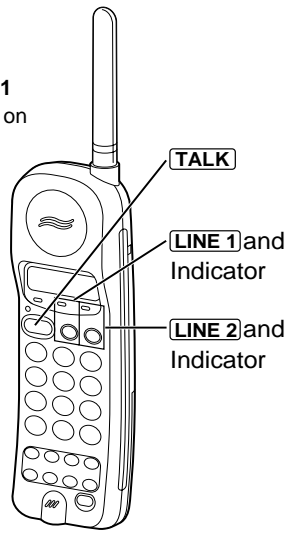
The handset and base unit can be used at the same time on separate telephone line.

### To make a call with the hand set

- 1 **Ex: If the base unit is using LINE 1**  
Press the other line button (LINE 2) on the handset.  
  - The LINE 2 indicator lights.

- 2 Dial a telephone number.

- 3 To hang up, press **TALK** or place the handset on the base unit.

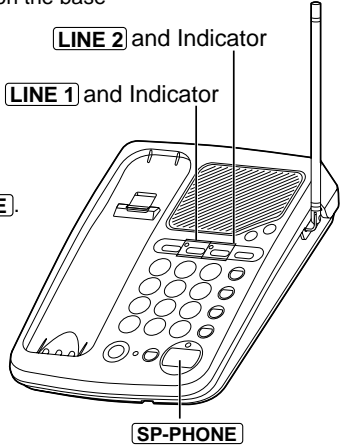


### To make a call with the base unit

- 1 **Ex: If the handset is using LINE 1** Press the other line button (LINE 2) on the base unit.  
  - The LINE 2 indicator lights.

- 2 Dial a telephone number.

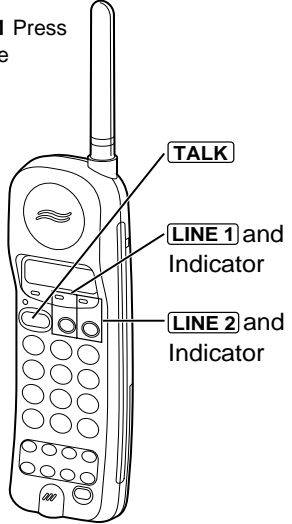
- 3 To hang up, press **SP-PHONE**.



### To answer a call with the base unit

- 1 **Ex: If the handset is using LINE 1** Press the other line button (LINE 2) on the handset.

- 2 To hang up, press **TALK** or place the handset on the base unit.

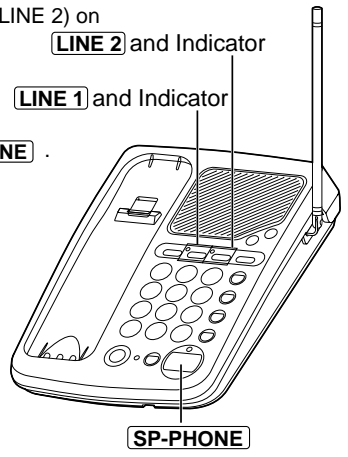


## To answer a call with the handset

- 1 **Ex: If the handset is using LINE 1**  
Press the other line button (LINE 2) on the base unit.

- 2 To hang up, press **SP-PHONE**.

- If another phone is connected on either line, you can also use it while the handset or base unit is using the other line.



## While You are Using a Line

During a conversation, if **two tones** sound and the other line indicator flashes quickly, an incoming call is being received on that line. You can answer the second call or make a second call by placing the first call on hold.

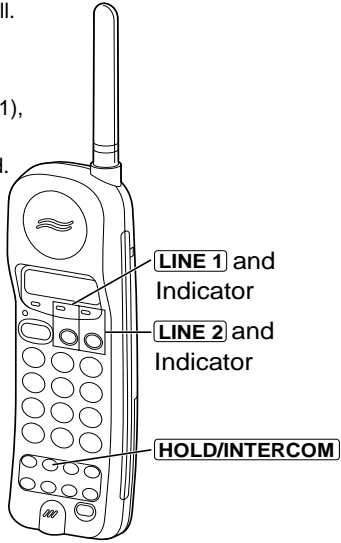
### With the handset

You may delete the **two tones** (incoming call tone) by programming.

- 1 **Ex: If you are using LINE 1**  
Press **HOLD/INTERCOM** to put the first call (LINE 1) on hold.

- 2 Press the other line button (LINE 2) to make or answer the second call.  
  - The LINE 2 indicator lights.

- 3 To return to the first call (LINE 1), press the first call (LINE 1).  
  - The second call is terminated.



- To hold the second call in step 3, press **HOLD/INTERCOM** before pressing the line button for the first call.